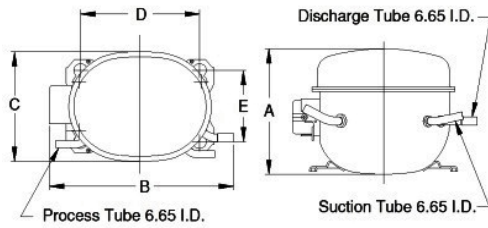


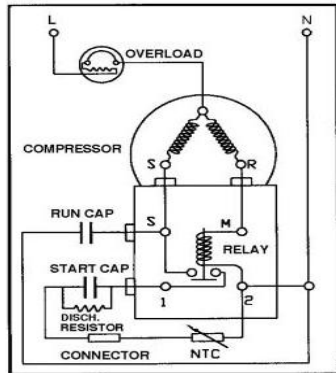


**PRINCIPAL DIMENSIONS - mm**



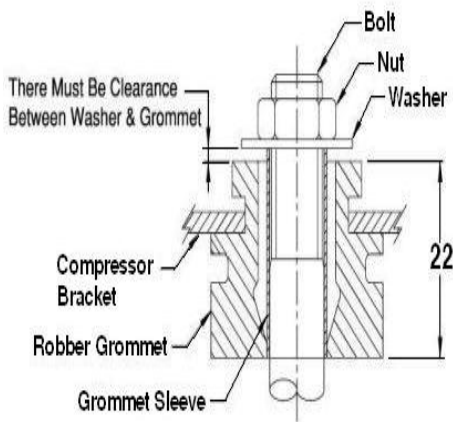
A: 212	B: 265	C: 155	D: 165	E: 102
--------	--------	--------	--------	--------

**SCHEMATIC WIRING DIAGRAM C.S.R.**



**SCHEMATIC WIRING DIAGRAM -**

**MOUNTING KIT**



Electrical : 220-240 V/50 Hz. 1 Phase

**Nominal Performance**

Capacity	470 / - Watts
	1,604 / - BTU/Hr
	404 / - Kcal/Hr
Power Input	435 / - Watts
Locked Rotor Amps	17.00 / - Amps
Max Continuous Current	- / - Amps
Rated Load Amps	2.50 / - Amps
COP	1.08 / - Watts / Watts
EER	3.69 / - BTU/W-Hr

**Testing Conditions**

Condensing Temperature	54.40 °C	129.9 °F
Evaporating Temperature	-23.30 / - °C	-9.9 / - °F
Liquid Temperature	32.20 °C	90.0 °F
Return Gas Temperature	32.20 °C	90.0 °F
Ambient Temperature	32.20 °C	90.0 °F

**Application**

Evaporating Temp. Range	LBP	@ -40.00 ° C to -12.20 ° C
		(-40.0° F to 10.0° F)
	Heat Pump	- ° C to - ° C
		(-° F to -° F)
Refrigerant	R22	
Refrigerant Flow Control	Capillary Tube	
Compressor Cooling	Fan	

**Compressor and Motor data**

Compressor Type	Reciprocating
Displacement	14.14 cc.
Oil Type	Mineral Oil
Oil Charge	437 cc.
Motor Type	C.S.R. ; 2 Pole 2,850 / - r/m
Voltage Range	187 - 264/- Volts 50/- Hz.
Winding Resistance at 25 ° C	
Start	10.00 Ohms
Run	4.40 Ohms
Weight with Oil	11.72 Kg.
Weight with Oil and Accessories	12.37 Kg.

**Electrical Components**

<b>Motor Protector</b>	
Type	External 3/4"
Model Number	KME660-7/C
Open / Close	90-100 / 70-52 ° C
1st Cycle trip at 25 ° C	10.20 Amps(main) - Amps(start)
<b>Motor Starter</b>	
Type	Current Relay
Model Number	KME682-16NT
Pick Up (max.)	7.70 Amps
Drop Out (min.)	6.75 Amps
Terminal Cover	KMD 901-12
Start Capacitor	36-43 µF 330 VAC.
Disch Resistor for Start Cap	15000 Ohms 2 W
Run Capacitor	8 µF 450 VAC.

**Mounting Kit**

Rubber Grommet	4007KMD905-3
Sleeve Grommet	3KMD903-2-Z
Washer	4023KEB387

Since we are constantly improving our product , the specification are subject to change without notice.

REV. DATE	C / N No.
10-02-17	0067/17

**Certificate Marks**

