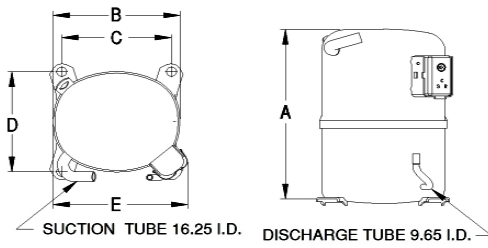


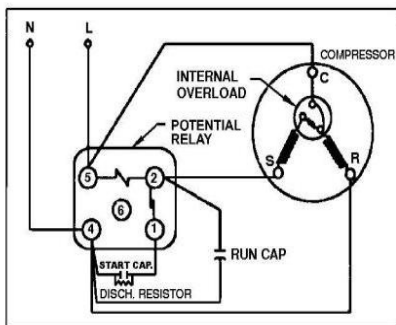


PRINCIPAL DIMENSIONS - mm



| | | | | |
|--------|--------|--------|--------|--------|
| A: 289 | B: 223 | C: 191 | D: 191 | E: 239 |
|--------|--------|--------|--------|--------|

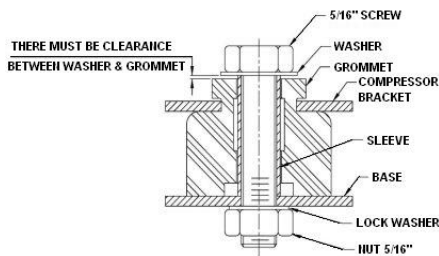
SCHEMATIC WIRING DIAGRAM C.S.R.



High Torque Start

SCHEMATIC WIRING DIAGRAM -

MOUNTING KIT



Electrical : 220-240 V/50 Hz. 1 Phase

Nominal Performance

| | |
|------------------------|------------------------|
| Capacity | 3,664 / - Watts |
| | 12,502 / - BTU/Hr |
| | 3,151 / - Kcal/Hr |
| Power Input | 2,034 / - Watts |
| Locked Rotor Amps | 48.00 / - Amps |
| Max Continuous Current | - / - Amps |
| Rated Load Amps | 10.00 / - Amps |
| COP | 1.80 / - Watts / Watts |
| EER | 6.15 / - BTU/W-Hr |

Testing Conditions

| | | |
|-------------------------|--------------|-------------|
| Condensing Temperature | 54.40 °C | 129.9 °F |
| Evaporating Temperature | -6.70 / - °C | 19.9 / - °F |
| Liquid Temperature | 46.10 °C | 115.0 °F |
| Return Gas Temperature | 35.00 °C | 95.0 °F |
| Ambient Temperature | 35.00 °C | 95.0 °F |

Application

| | | |
|--------------------------|----------------|---|
| Evaporating Temp. Range | MBP | @ -23.30 °C to -1.10 °C (-9.9° F to 30.0° F) |
| | Heat Pump | - °C to - °C (-° F to -° F) |
| Refrigerant | R404A | |
| Refrigerant Flow Control | Capillary Tube | |
| Compressor Cooling | Fan | |

Compressor and Motor data

| | |
|---------------------------------|-------------------------------|
| Compressor Type | Reciprocating |
| Displacement | 43.10 cc. |
| Oil Type | Polyolester Oil |
| Oil Charge | 1,050 cc. |
| Motor Type | C.S.R. ; 2 Pole 2,850 / - r/m |
| Voltage Range | 198-253/- Volts 50/- Hz. |
| Winding Resistance at 25 °C | |
| Start | 3.67 Ohms |
| Run | 1.43 Ohms |
| Weight with Oil | 24.28 Kg. |
| Weight with Oil and Accessories | 24.78 Kg. |

Electrical Components

Motor Protector

| | |
|-------------------------|------------------------------------|
| Type | Internal Overload |
| Model Number | 4042KGE656-10 |
| Open / Close | 130-140 / 78-60 °C |
| 1st Cycle trip at 25 °C | 52.00 Amps(main) 31.00 Amps(start) |

Motor Starter

| | |
|------------------------------|-------------------------|
| Type | Potential Relay |
| Model Number | 4043KGE681-9 (RVA4AM6D) |
| Pick Up (max.) | 242.00-272.00 Volts |
| Drop Out (min.) | 60.00-121.00 Volts |
| Terminal Cover | KGM 901-3 |
| Start Capacitor | 130-156 µF 330 VAC. |
| Disch Resistor for Start Cap | 15000 Ohms 2 W |
| Run Capacitor | 40 µF 440 VAC. |

Mounting Kit

| | |
|----------------|--------------|
| Rubber Grommet | 4007KGM905-2 |
| Sleeve Grommet | 4023KGM903-2 |
| Washer | - |

Since we are constantly improving our product , the specification are subject to change without notice.

REV. DATE
13-10-17

C / N No.
0394/17

Certificate Marks

