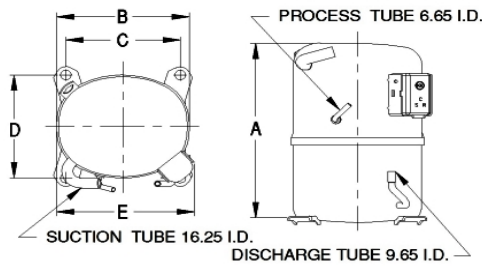


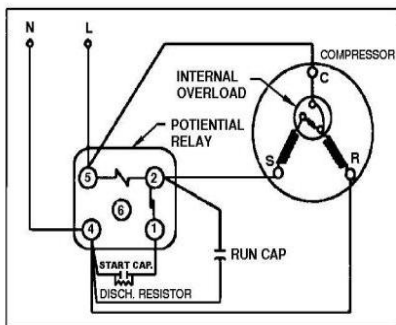


PRINCIPAL DIMENSIONS - mm



A: 324	B: 223	C: 191	D: 191	E: 239
--------	--------	--------	--------	--------

SCHEMATIC WIRING DIAGRAM C.S.R.

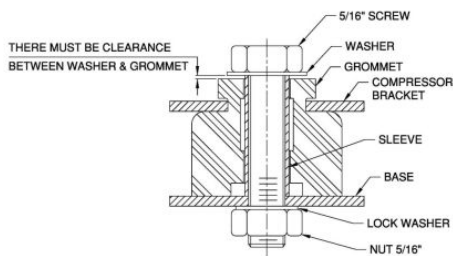


High Torque Start

SCHEMATIC WIRING DIAGRAM -

-

MOUNTING KIT



Electrical : 220-240 V/50 Hz. 1 Phase

Nominal Performance

Capacity	4,396 / 7,825 Watts
	14,999 / 26,699 BTU/Hr
	3,780 / 6,729 Kcal/Hr
Power Input	2,585 / 3,227 Watts
Locked Rotor Amps	70.00 / 70.00 Amps
Max Continuous Current	- / - Amps
Rated Load Amps	13.00 / 15.70 Amps
COP	1.70 / 2.42 Watts / Watts
EER	5.80 / 8.27 BTU/W-Hr

Testing Conditions

Condensing Temperature	54.40 °C	129.9 °F
Evaporating Temperature	-6.70 / 7.20 °C	19.9 / 45.0 °F
Liquid Temperature	46.10 °C	115.0 °F
Return Gas Temperature	35.00 °C	95.0 °F
Ambient Temperature	35.00 °C	95.0 °F

Application

Evaporating Temp. Range	MBP/HBP	@ -23.30 ° C to 12.70 ° C (-9.9° F to 54.9° F)
	Heat Pump	- ° C to - ° C (-° F to -° F)
Refrigerant	R404A	
Refrigerant Flow Control	Capillary Tube	
Compressor Cooling	Fan	

Compressor and Motor data

Compressor Type	Reciprocating
Displacement	53.50 cc.
Oil Type	Polyolester Oil
Oil Charge	1,050 cc.
Motor Type	C.S.R. ; 2 Pole 2,850 / 2,850 r/m
Voltage Range	198-264/- Volts 50/- Hz.
Winding Resistance at 25 ° C	
Start	4.57 Ohms
Run	1.04 Ohms
Weight with Oil	28.55 Kg.
Weight with Oil and Accessories	28.69 Kg.

Electrical Components

Motor Protector

Type	Internal Overload
Model Number	4042KGE656-7
Open / Close	120-130 / 60-78 ° C
1st Cycle trip at 25 ° C	64.00 Amps(main) 48.00 Amps(start)

Motor Starter (CSR Only)

Type	Potential Relay
Model Number	4043KGE681-9 (RVA4AM6D)
Pick Up (max.)	242.00-272.00 Volts
Drop Out (min.)	60.00-121.00 Volts
Terminal Cover	KGM 901-3
Start Capacitor (CSR Only)	161-193 µF 330 VAC.
Disch Resistor for Start Cap	15000 Ohms 2 W
Run Capacitor	40 µF 440 VAC.

Mounting Kit

Rubber Grommet	4007KGM905-2
Sleeve Grommet	4023KGM903-2
Washer	-

Since we are constantly improving our product , the specification are subject to change without notice.

REV. DATE
13-10-17

C / N No.
0394/17

Certificate Marks

