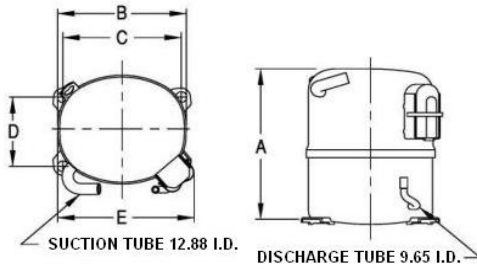


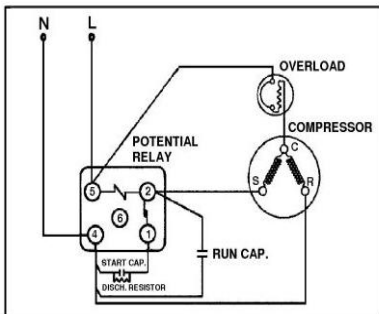


PRINCIPAL DIMENSIONS - mm



| | | | | |
|--------|--------|--------|--------|--------|
| A: 264 | B: 223 | C: 203 | D: 122 | E: 239 |
|--------|--------|--------|--------|--------|

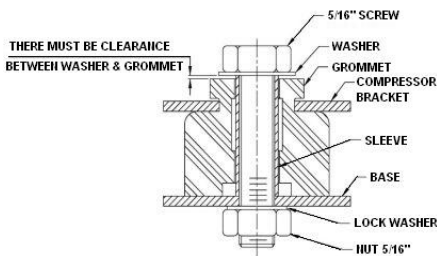
SCHEMATIC WIRING DIAGRAM C.S.R.



High Torque Start

SCHEMATIC WIRING DIAGRAM -

MOUNTING KIT



Electrical : 220-240 V/50 Hz. 1 Phase

Nominal Performance

| | |
|------------------------|------------------------|
| Capacity | 1,900 / - Watts |
| | 6,483 / - BTU/Hr |
| | 1,634 / - Kcal/Hr |
| Power Input | 1,100 / - Watts |
| Locked Rotor Amps | 28.00 / - Amps |
| Max Continuous Current | - / - Amps |
| Rated Load Amps | 5.30 / - Amps |
| COP | 1.73 / - Watts / Watts |
| EER | 5.89 / - BTU/W-Hr |

Testing Conditions

| | | |
|-------------------------|--------------|-------------|
| Condensing Temperature | 54.40 °C | 129.9 °F |
| Evaporating Temperature | -6.70 / - °C | 19.9 / - °F |
| Liquid Temperature | 46.10 °C | 115.0 °F |
| Return Gas Temperature | 35.00 °C | 95.0 °F |
| Ambient Temperature | 35.00 °C | 95.0 °F |

Application

| | | |
|--------------------------|--------------------------------|---|
| Evaporating Temp. Range | CBP | @ -23.30 °C to 12.70 °C (-9.9° F to 54.9° F) |
| | Heat Pump | - °C to - °C (-° F to -° F) |
| Refrigerant | R22 | |
| Refrigerant Flow Control | Capillary tube/Expansion valve | |
| Compressor Cooling | Fan | |

Compressor and Motor data

| | |
|---------------------------------|-------------------------------|
| Compressor Type | Reciprocating |
| Displacement | 24.20 cc. |
| Oil Type | Mineral Oil |
| Oil Charge | 850 cc. |
| Motor Type | C.S.R. ; 2 Pole 2,850 / - r/m |
| Voltage Range | 198-264/- Volts 50/- Hz. |
| Winding Resistance at 25 °C | |
| Start | 4.79 Ohms |
| Run | 2.34 Ohms |
| Weight with Oil | 21.74 Kg. |
| Weight with Oil and Accessories | 22.45 Kg. |

Electrical Components

Motor Protector

| | |
|-------------------------|--------------------------------|
| Type | External Overload 3/4" |
| Model Number | KME664-17/C |
| Open / Close | 140-150 / 70-52 °C |
| 1st Cycle trip at 25 °C | 28.50 Amps(main) - Amps(start) |

Motor Starter

| | |
|------------------------------|------------------------|
| Type | Potential Relay |
| Model Number | 4043KGE681-3 (RVA3H6D) |
| Pick Up (max.) | 190.00-215.00 Volts |
| Drop Out (min.) | 40.00-105.00 Volts |
| Terminal Cover | KGM 901-1 |
| Start Capacitor | 88-106 µF 330 VAC. |
| Disch Resistor for Start Cap | 15000 Ohms 2 W |
| Run Capacitor | 25 µF 440 VAC. |

Mounting Kit

| | |
|----------------|--------------|
| Rubber Grommet | 4007KGM905-2 |
| Sleeve Grommet | 4023KGM903-2 |
| Washer | - |

Since we are constantly improving our product , the specification are subject to change without notice.

| | |
|-----------|-----------|
| REV. DATE | C / N No. |
| 13-10-17 | 0394/17 |

Certificate Marks

