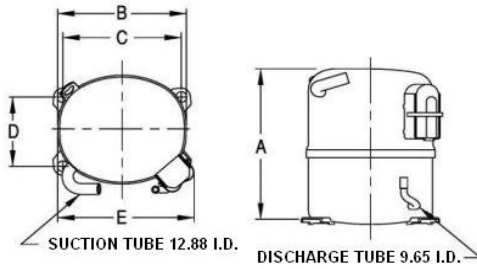


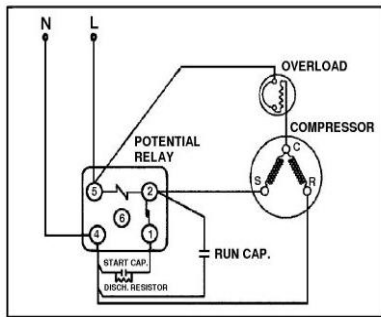


**PRINCIPAL DIMENSIONS - mm**



A: 264	B: 223	C: 203	D: 122	E: 239
--------	--------	--------	--------	--------

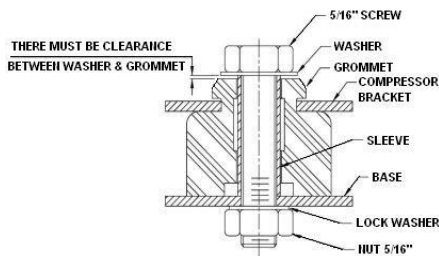
**SCHEMATIC WIRING DIAGRAM C.S.R.**



High Torque Start

**SCHEMATIC WIRING DIAGRAM -**

**MOUNTING KIT**



Electrical : 220-240 V/50 Hz. 1 Phase

**Nominal Performance**

Capacity	2,460 / - Watts
	8,394 / - BTU/Hr
	2,115 / - Kcal/Hr
Power Input	1,425 / - Watts
Locked Rotor Amps	40.00 / - Amps
Max Continuous Current	- / - Amps
Rated Load Amps	6.47 / - Amps
COP	1.73 / - Watts / Watts
EER	5.89 / - BTU/W-Hr

**Testing Conditions**

Condensing Temperature	54.40 °C	129.9 °F
Evaporating Temperature	-6.70 / - °C	19.9 / - °F
Liquid Temperature	46.10 °C	115.0 °F
Return Gas Temperature	35.00 °C	95.0 °F
Ambient Temperature	35.00 °C	95.0 °F

**Application**

Evaporating Temp. Range	CBP	@ -23.30 ° C to 12.70 ° C (-9.9° F to 54.9° F)
	Heat Pump	- ° C to - ° C (-° F to -° F)
Refrigerant	R22	
Refrigerant Flow Control	Capillary tube/Expansion valve	
Compressor Cooling	Fan	

**Compressor and Motor data**

Compressor Type	Reciprocating
Displacement	30.50 cc.
Oil Type	Mineral Oil
Oil Charge	850 cc.
Motor Type	C.S.R. ; 2 Pole 2,850 / - r/m
Voltage Range	198-264/- Volts 50/- Hz.
Winding Resistance at 25 ° C	
Start	4.79 Ohms
Run	1.93 Ohms
Weight with Oil	22.48 Kg.
Weight with Oil and Accessories	23.23 Kg.

**Electrical Components**

<b>Motor Protector</b>	
Type	External Overload 3/4"
Model Number	KME664-17/C
Open / Close	140-150 / 70-52 ° C
1st Cycle trip at 25 ° C	28.50 Amps(main) - Amps(start)
<b>Motor Starter</b>	
Type	Potential Relay
Model Number	4043KGE681-3 (RVA3H6D)
Pick Up (max.)	190.00-215.00 Volts
Drop Out (min.)	40.00-105.00 Volts
Terminal Cover	KGM 901-1
Start Capacitor	145-174 µF 330 VAC.
Disch Resistor for Start Cap	15000 Ohms 2 W
Run Capacitor	25 µF 440 VAC.

**Mounting Kit**

Rubber Grommet	4007KGM905-2
Sleeve Grommet	4023KGM903-2
Washer	-

Since we are constantly improving our product , the specification are subject to change without notice.

REV. DATE	C / N No.
13-10-17	0394/17

**Certificate Marks**

