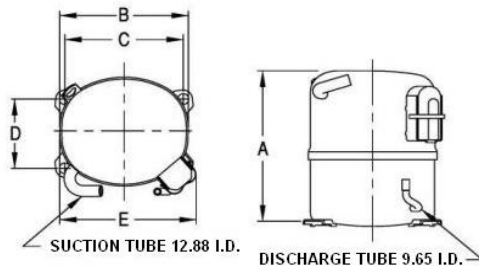


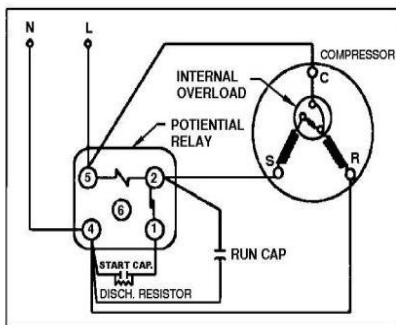


PRINCIPAL DIMENSIONS - mm



A: 264	B: 223	C: 203	D: 122	E: 239
--------	--------	--------	--------	--------

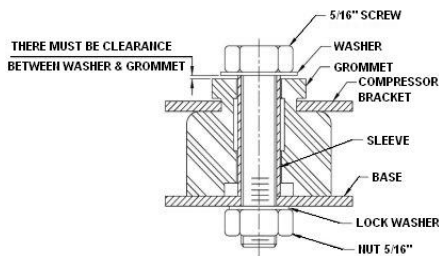
SCHEMATIC WIRING DIAGRAM C.S.R.



High Torque Start

SCHEMATIC WIRING DIAGRAM -

MOUNTING KIT



Electrical : 220-240 V/50 Hz. 1 Phase

Nominal Performance

Capacity	3,030 / 5,276 Watts
	10,338 / 18,002 BTU/Hr
	2,605 / 4,537 Kcal/Hr
Power Input	1,638 / 2,198 Watts
Locked Rotor Amps	53.00 / 53.00 Amps
Max Continuous Current	- / - Amps
Rated Load Amps	8.50 / 10.80 Amps
COP	1.85 / 2.40 Watts / Watts
EER	6.31 / 8.19 BTU/W-Hr

Testing Conditions

Condensing Temperature	54.40 °C	129.9 °F
Evaporating Temperature	-6.70 / - °C	19.9 / - °F
Liquid Temperature	46.10 °C	115.0 °F
Return Gas Temperature	35.00 °C	95.0 °F
Ambient Temperature	35.00 °C	95.0 °F

Application

Evaporating Temp. Range	MBP/HBP	@ -23.30 °C to 12.70 °C (-9.9° F to 54.9° F)
	Heat Pump	- °C to - °C (-° F to -° F)
Refrigerant	R22	
Refrigerant Flow Control	Capillary tube/Expansion valve	
Compressor Cooling	Fan	

Compressor and Motor data

Compressor Type	Reciprocating
Displacement	34.50 cc.
Oil Type	Polyolester Oil
Oil Charge	417 cc.
Motor Type	C.S.R. ; 2 Pole 2,850 / 2,850 r/m
Voltage Range	198-264/- Volts 50/- Hz.
Winding Resistance at 25 °C	
Start	4.40 Ohms
Run	1.30 Ohms
Weight with Oil	23.16 Kg.
Weight with Oil and Accessories	24.26 Kg.

Electrical Components

Motor Protector	
Type	Internal Overload
Model Number	4042KGE656-10
Open / Close	130-140 / 60-78 °C
1st Cycle trip at 25 °C	52.00 Amps(main) 31.00 Amps(start)
Motor Starter	
Type	Potential Relay
Model Number	4023KGE681-3 (RVA3H6D)
Pick Up (max.)	190.00-215.00 Volts
Drop Out (min.)	40.00-105.00 Volts
Terminal Cover	KGM 901-2
Start Capacitor	108-130 µF 330 VAC.
Disch Resistor for Start Cap	15000 Ohms 2 W
Run Capacitor	30 µF 425 VAC.

Mounting Kit

Rubber Grommet	4007KGM905-2
Sleeve Grommet	4023KGM903-2
Washer	-

Since we are constantly improving our product , the specification are subject to change without notice.

REV. DATE	C / N No.
13-10-17	0394/17

Certificate Marks



RoHS