

DLE7.5CN Energy-optimized LBP/MBP Compressor R290 220-240V 50Hz

General

Code number	102H4852
Approvals	EN 60335-2-34 w. Annex AA
Compressors on pallet	100

Application

Application	LBP/MBP					
Frequency	Hz	50			60	
Evaporating temperature	°C	-35 to 7.2			-	
Voltage range	V	198 to 254			-	
Max. condensing temperature continuous (short)	°C	55 (65)			-	
Max. winding temperature continuous (short)	°C	125 (135)			-	

Cooling requirements

Frequency	Hz	50			60		
Application		LBP	MBP	HBP	LBP	MBP	HBP
32°C		F ₂	F ₂	-	-	-	-
38°C		F ₂	F ₂	-	-	-	-
43°C		F ₂	F ₂	-	-	-	-

Remarks on application:
For evaporation temperatures higher than 0 °C do not run compressor at condensing temperatures higher 50 °C in steady state operation.

Motor

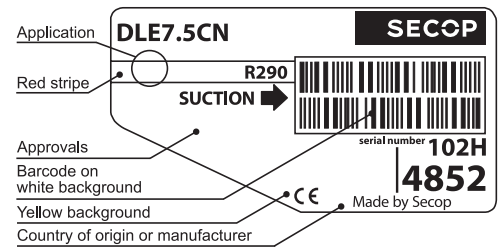
Motor type	CSIR/RSIR/RSCR		
LRA (rated after 4 sec. UL984), HST LST	A	9.3	9.2
Cut in Current, HST LST	A	9.3	14.5
Resistance, main start winding (25°C)	Ω	10.9	8.3

Design

Displacement	cm ³	7.48
Oil quantity (type)	cm ³	155 (polyolester)
Maximum refrigerant charge	g	150
Free gas volume in compressor	cm ³	1465
Weight without electrical equipment	kg	8.0

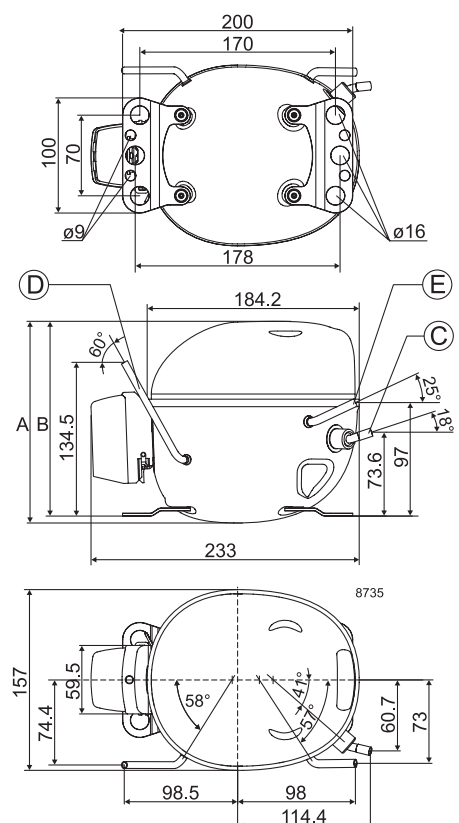
Dimensions

Height	mm	A	175
		B	169
		B1	-
		B2	-
Suction connector	location/I.D. mm angle	C	6.2 18°
	material comment	Cu-plated steel Rubber plug	
Process connector	location/I.D. mm angle	D	4.5 60°
	material comment	Copper Rubber plug	
Discharge connector	location/I.D. mm angle	E	5.0 25°
	material comment	Copper Rubber plug	
Oil cooler connector	location/I.D. mm angle	F	-
	material comment	-	
Connector tolerance	I.D. mm	±0.09, on 5.0 +0.12/+0.22 on 4.5 +0.10/-0.20	
Remarks:			



Yellow warning label

- S = Static cooling normally sufficient
- O = Oil cooling
- F₁ = Fan cooling 1.5 m/s
(compressor compartment temperature equal to ambient temperature)
- F₂ = Fan cooling 3.0 m/s necessary
- SG = Suction gas cooling normally sufficient
- = not applicable in this area



EN 12900 LBP

220V, 50Hz, fan cooling F₂

Evap. temp. in °C	-45	-40	-35	-30	-25	-23.3	-20	-15	-10	-6.7	-5	0	5	7.2	10	15	20
Capacity in W			203	257	321	346	398	488	593	671	714	853	1011	1086			
Power cons. in W			179	198	216	223	235	255	274	287	294	314	334	343			
Current cons. in A			1.40	1.45	1.50	1.52	1.55	1.62	1.68	1.73	1.76	1.83	1.91	1.95			
COP in W/W			1.13	1.30	1.49	1.55	1.69	1.92	2.16	2.34	2.43	2.72	3.03	3.17			

EN 12900 MBP

220V, 50Hz, fan cooling F₂

Evap. temp. in °C	-45	-40	-35	-30	-25	-23.3	-20	-15	-10	-6.7	-5	0	5	7.2	10	15	20
Capacity in W			189	240	301	324	373	457	555	627	668	797	945	1016			
Power cons. in W			185	205	226	233	246	267	288	302	309	330	352	362			
Current cons. in A			1.41	1.46	1.52	1.54	1.58	1.65	1.73	1.78	1.81	1.89	1.98	2.02			
COP in W/W			1.03	1.17	1.33	1.39	1.51	1.71	1.93	2.08	2.16	2.41	2.68	2.81			

ASHRAE LBP

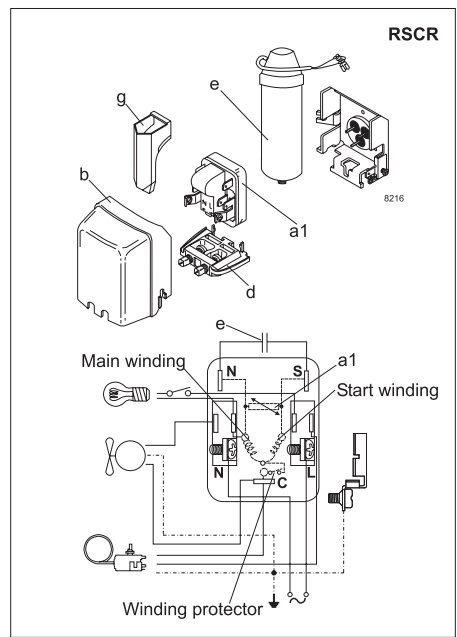
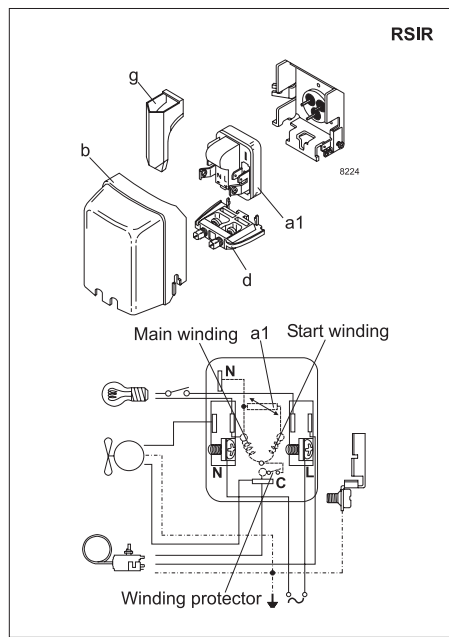
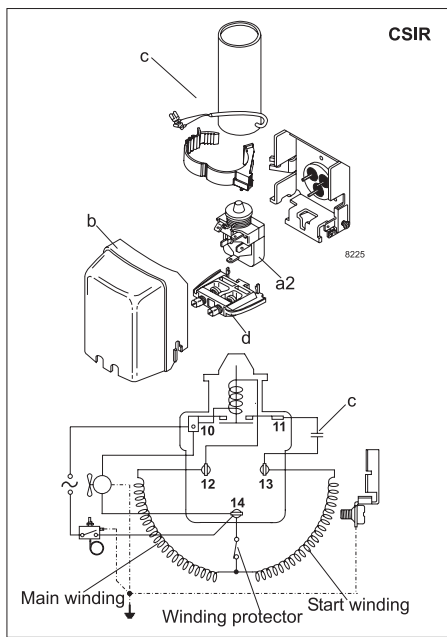
220V, 50Hz, fan cooling F₂

Evap. temp. in °C	-45	-40	-35	-30	-25	-23.3	-20	-15	-10	-6.7	-5	0	5	7.2	10	15	20
Capacity in W			209	269	340	366	422	520	633	718	766	919	1095	1181			
Power cons. in W			188	214	240	249	266	292	319	336	345	372	399	411			
Current cons. in A			1.41	1.48	1.56	1.59	1.65	1.74	1.84	1.91	1.95	2.06	2.18	2.23			
COP in W/W			1.11	1.26	1.41	1.47	1.59	1.78	1.99	2.14	2.22	2.47	2.74	2.87			

ASHRAE MBP/HBP

220V, 50Hz, fan cooling F₂

Evap. temp. in °C	-45	-40	-35	-30	-25	-23.3	-20	-15	-10	-6.7	-5	0	5	7.2	10	15	20
Capacity in W			189	243	307	331	381	469	571	648	690	828	986	1063			
Power cons. in W			188	214	240	249	266	292	319	336	345	372	399	411			
Current cons. in A			1.41	1.48	1.56	1.59	1.65	1.74	1.84	1.91	1.95	2.06	2.18	2.23			
COP in W/W			1.00	1.14	1.28	1.33	1.43	1.60	1.79	1.93	2.00	2.22	2.47	2.58			



Accessories for	DLE7.5CN	Figure	Code number
PTC starting device	6.3 mm spade connectors	a1	-
	4.8 mm spade connectors		-
ePTC starting device	4.8 mm spade connectors		103N0050
Starting relay	6.3 mm spade connectors	a2	117U7002
Start. capacitor 80 µF	6.3 mm spade connectors	c	117U5015
Cover		b	103N0491
Run capacitor 5 µF (optional)	6.3 mm spade connectors	e	-
	4.8 mm spade connectors		117-7129
Cord relief		d	103N1010
Protection screen for PTC		g	-

Test conditions	EN 12900		ASHRAE	
	LBP	MBP	LBP	MBP
Condensing temperature	40°C	45°C	54.4°C	54.4°C
Ambient temperature	32°C	32°C	32.2°C	35°C
Suction gas temperature	20°C	20°C	32.2°C	35°C
Liquid temperature	no subcooling		32.2°C	46.1°C

Mounting accessories	Code number	
Bolt joint for one comp.	Ø: 16 mm	118-1917
Bolt joint in quantities	Ø: 16 mm	118-1918
Snap-on in quantities	Ø: 16 mm	118-1919

Secop can accept no responsibility for possible errors in catalogues, brochures and other printed material. Secop reserves the right to alter its products without notice. This also applies to products already on order provided that such alterations can be made without consequential changes being necessary in specifications already agreed. All trademarks in this material are property of the respective companies. Secop and the Secop logotype are trademarks of Secop GmbH. All rights reserved. www.secop.com