



Compressor
Voltage Code : CZ

AG5553E

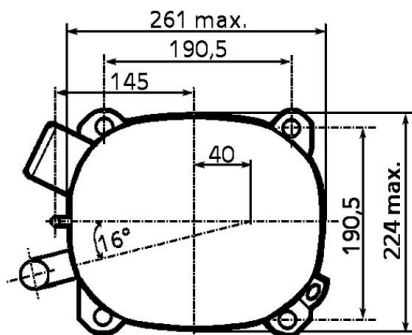
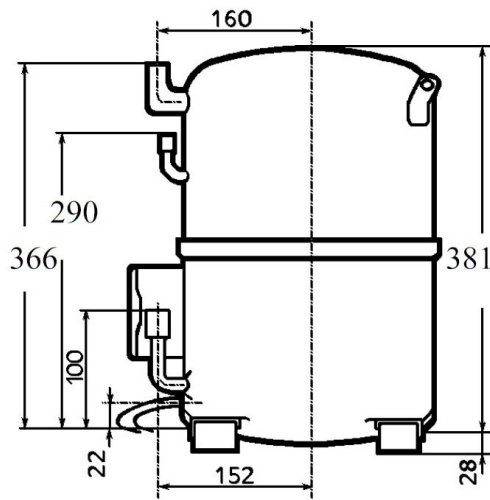
Air Conditioning & Heating (CA)

208V 1~ 50 Hz / 230V 1~ 60 Hz

R22

AGB5553ECZ

Conditions	Frequency	Nominal Cooling Capacity		Sound Power ISO3745 / ISO 3743-1
		Watts	BTU/h	
EN12900 / R22	50 Hz / 60 Hz	11751 / 13832	40071 / 47167	80 dBA



* EN12900 : T°Cond. 50.0°C / T°Evap. 5.0°C / T°Superheat. 10.0°C
T°Subcooling. 0.0K

Certificates :



Displacement (cc)	100,7
Net Weight (Kg)	43.5
Oil Quantity (cc)	1760.0
Oil Type	Mineral
Expansion Device	Capillary_Tube
Cooling	Fan
Main Winding (Ohm)	0.36
Start Winding (Ohm)	1.96
Current	
RLA (A)	27.6 27.5
MCC (A)	41 42
LRA (A)	135 131
Electrical Equipment	CSR,PSC
Overload	Interne
Start Capacitor	156 µF / 250 V
Run Capacitor	45 µF / 400 V
Potential Relay	3ARR3*10T*
Pick Up	190/215V
Drop Out	40/105V
Optional	RVA3AH**
Refrigerating connection for	
Suction Tube	22.2 (7/8")
Discharge Tube	12.7 (1/2")
Process Tube	6.35 (1/4")

Note : Tecumseh reserves the right to change information contained in this document without notification.



Tecumseh

AG5553E	Tension CZ : 208V 1~ 50 Hz / 230V 1~ 60 Hz
----------------	---

Les performances sont données dans les conditions EN12900 :	Surchauffe :	10.0 K
Condition Dew	Sous refroidissement :	0.0 K
The performance data are in EN12900 conditions :	Superheat :	10.0 K
Dew Condition	Subcooling :	0.0 K

50 Hz R22											
											N°337EH-C
4 T condensation	5 T évaporation	(°C)	-25	-20	-15	-10	-5	0	5	10	15
40	1 P frigorifique	(Watt)				6789	8692	11085	13967	17341	21206
	2 P absorbée	(W)				3250	3557	3872	4197	4530	4872
	3 I absorbée	(A)				22.4	22.9	23.7	24.9	26.3	28.1
50	1 P frigorifique	(Watt)					7120	9215	11751	14728	18148
	2 P absorbée	(W)					3757	4183	4615	5053	5496
	3 I absorbée	(A)					23.7	25.1	26.9	28.9	31.2
60	1 P frigorifique	(Watt)						7429	9627	12216	15197
	2 P absorbée	(W)						4497	5035	5576	6120
	3 I absorbée	(A)						26.5	28.9	31.5	34.3

60 Hz R22											
											N°337EH-C
4 T condensation	5 T évaporation	(°C)	-25	-20	-15	-10	-5	0	5	10	15
40	1 P frigorifique	(Watt)				8070	10302	13092	16441	20351	24821
	2 P absorbée	(W)				3743	4136	4557	5004	5478	5980
	3 I absorbée	(A)				18.4	20.0	21.7	23.6	25.6	27.9
50	1 P frigorifique	(Watt)					8438	10884	13832	17284	21241
	2 P absorbée	(W)					4370	4923	5504	6111	6745
	3 I absorbée	(A)					20.6	23.0	25.5	28.2	31.0
60	1 P frigorifique	(Watt)						8774	11331	14335	17787
	2 P absorbée	(W)						5292	6005	6744	7510
	3 I absorbée	(A)						24.2	27.4	30.7	34.2

1 = cooling capacity 2 = power input 3 = current 4 = condensing temperature 5 = evaporating temperature

Nota : Tecumseh se réserve le droit de modifier les informations contenues dans ce document sans préavis.
Note : Tecumseh reserves the right to change information contained in this document without notification.

© 2023 Tecumseh Products Company
All rights reserved