



Compressor
Voltage Code : CZ

AG5561E

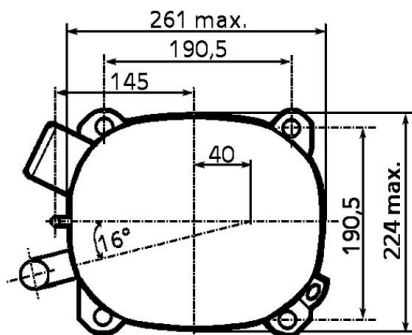
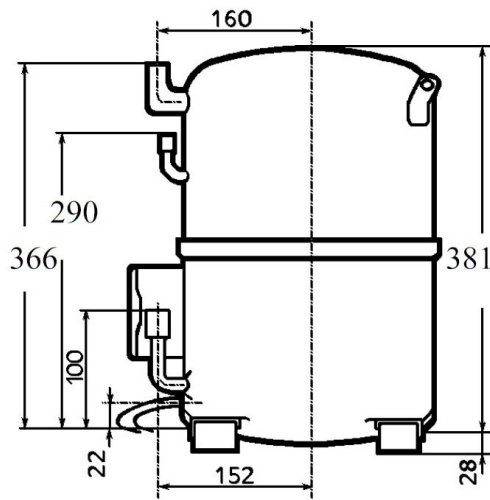
Air Conditioning & Heating (CA)

208V 1~ 50 Hz / 230V 1~ 60 Hz

R22

AGB5561ECZ

Conditions	Frequency	Nominal Cooling Capacity		Sound Power ISO3745 / ISO 3743-1
		Watts	BTU/h	
EN12900 / R22	50 Hz / 60 Hz	13565 / 15984	46258 / 54504	79 dBA



* EN12900 : T°Cond. 50.0°C / T°Evap. 5.0°C / T°Superheat. 10.0°C
T°Subcooling. 0.0K

Certificates :



Displacement (cc)	112,5
Net Weight (Kg)	44.5
Oil Quantity (cc)	1760.0
Oil Type	Mineral
Expansion Device	Capillary_Tube
Cooling	Fan
Main Winding (Ohm)	0.3
Start Winding (Ohm)	1.55
Current	
RLA (A)	31.1 30.8
MCC (A)	47 52
LRA (A)	158 144
Electrical Equipment	CSR,PSC
Overload	Interne
Start Capacitor	156 µF / 250 V
Run Capacitor	55 µF / 400 V
Potential Relay	3ARR3*6S*
Pick Up	180/195V
Drop Out	60/121V
Optional	/
Refrigerating connection for	
Suction Tube	22.2 (7/8")
Discharge Tube	12.7 (1/2")
Process Tube	6.35 (1/4")

Note : Tecumseh reserves the right to change information contained in this document without notification.



Tecumseh

AG5561E	Tension CZ : 208V 1~ 50 Hz / 230V 1~ 60 Hz
----------------	---

Les performances sont données dans les conditions EN12900 :	Surchauffe :	10.0 K
Condition Dew	Sous refroidissement :	0.0 K
The performance data are in EN12900 conditions :	Superheat :	10.0 K
Dew Condition	Subcooling :	0.0 K

50 Hz R22											
											N°337GH-C
4 T condensation	5 T évaporation	(°C)	-25	-20	-15	-10	-5	0	5	10	15
40	1 P frigorifique	(Watt)				7835	10134	12897	16125	19818	23976
	2 P absorbée	(W)				3683	4013	4344	4676	5010	5344
	3 I absorbée	(A)				24.8	25.5	26.5	27.6	28.9	30.4
50	1 P frigorifique	(Watt)					8303	10723	13565	16831	20522
	2 P absorbée	(W)					4239	4693	5143	5588	6029
	3 I absorbée	(A)					26.4	28.0	29.8	31.7	33.8
60	1 P frigorifique	(Watt)						8646	11113	13961	17192
	2 P absorbée	(W)						5046	5612	6168	6714
	3 I absorbée	(A)						29.6	32.0	34.5	37.2

60 Hz R22											
											N°337GH-C
4 T condensation	5 T évaporation	(°C)	-25	-20	-15	-10	-5	0	5	10	15
40	1 P frigorifique	(Watt)				9308	12013	15243	19000	23283	28093
	2 P absorbée	(W)				4241	4667	5105	5555	6018	6494
	3 I absorbée	(A)				20.1	22.1	24.1	26.2	28.3	30.5
50	1 P frigorifique	(Watt)					9842	12673	15984	19774	24045
	2 P absorbée	(W)					4930	5516	6110	6714	7326
	3 I absorbée	(A)					22.8	25.5	28.3	31.1	34.0
60	1 P frigorifique	(Watt)						10218	13093	16402	20144
	2 P absorbée	(W)						5930	6667	7410	8159
	3 I absorbée	(A)						26.9	30.4	33.9	37.5

1 = cooling capacity 2 = power input 3 = current 4 = condensing temperature 5 = evaporating temperature

Nota : Tecumseh se réserve le droit de modifier les informations contenues dans ce document sans préavis.
Note : Tecumseh reserves the right to change information contained in this document without notification.

© 2023 Tecumseh Products Company
All rights reserved