



Compressor
Voltage Code : FZ

FH4540Z

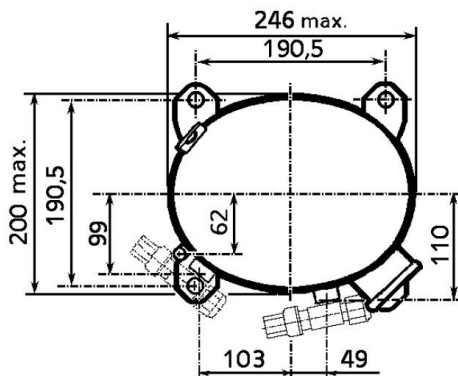
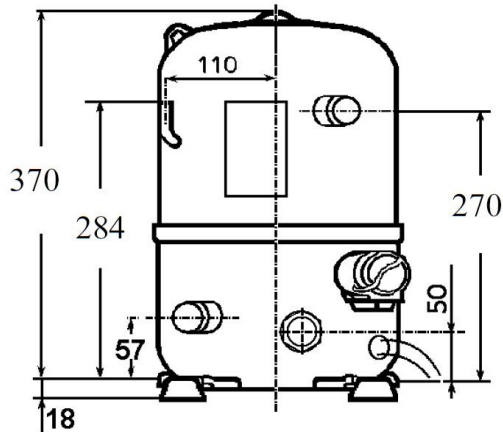
High Temp. Commercial (HP)

220 - 240V 1~ 50 Hz

R452A / R404A / R448A / R449A

AHC4540ZFZ

Conditions	Frequency	Nominal Cooling Capacity		Sound Power ISO3745 / ISO 3743-1
		Watts	BTU/h	
EN12900_HP / R452A	50 Hz	8355	28492	80 dBA
EN12900_HP / R404A	50 Hz	8335	28423	80 dBA
EN12900_HP / R448A	50 Hz	8363	28518	80 dBA
EN12900_HP / R449A	50 Hz	8363	28518	80 dBA



Displacement (cc)	74,2
Net Weight (Kg)	36.0
Oil Quantity (cc)	1330.0
Oil Type	Polyolester
Expansion Device	Capillary_Tube/Expansion_Valve
Cooling	Fan
Main Winding (Ohm)	0.5
Start Winding (Ohm)	2.8
Current	
RLA (A)	19.4
MCC (A)	27
LRA (A)	88
Electrical Equipment	CSR
Overload	Interne
Start Capacitor	156 µF / 330 V
Run Capacitor	45 µF / 400 V
Potential Relay	RVA6M**
Pick Up	239/268V
Drop Out	60/135V
Optional	3ARR3*4AA*
Refrigerating connection for	
Suction Tube	22.2 (7/8")
Discharge Tube	12.7 (1/2")
Process Tube	6.35 (1/4")

* EN12900_HP : T°Cond. 50.0°C / T°Evap. 5.0°C / T°Return gas temp.. 20.0°C
T°Subcooling. 0.0K

Certificates :



Note : Tecumseh reserves the right to change information contained in this document without notification.





Tecumseh

FH4540Z	Tension FZ : 220 - 240V 1~ 50 Hz
----------------	---

Les performances sont données dans les **conditions EN12900_HP** :
 Condition Dew
 The performance data are in **EN12900_HP conditions** :
 Dew Condition

Gaz aspirés : 20.0 °C
 Sous refroidissement : 0.0 K
 Return gas : 20.0 °C
 Subcooling : 0.0 K

50 Hz R452A											
 N°2128											
4 T condensation	5 T évaporation	(°C)	-25	-20	-15	-10	-5	0	5	10	15
30	1 P frigorifique	(Watt)	2868	3853	5019	6384	7969	9794	11880	14246	16913
	2 P absorbée	(W)	1798	2038	2279	2525	2781	3050	3338	3649	3988
	3 I absorbée	(A)	9.78	10.6	11.6	12.6	13.7	14.9	16.2	17.6	19.0
40	1 P frigorifique	(Watt)		3170	4226	5434	6812	8382	10162	12175	14439
	2 P absorbée	(W)		2116	2401	2687	2978	3279	3595	3930	4288
	3 I absorbée	(A)		10.8	11.9	13.1	14.3	15.6	17.0	18.5	20.1
50	1 P frigorifique	(Watt)			3318	4374	5552	6873	8355	10020	11888
	2 P absorbée	(W)			2446	2780	3115	3456	3807	4174	4559
	3 I absorbée	(A)			12.1	13.4	14.7	16.2	17.7	19.3	21.1
60	1 P frigorifique	(Watt)				3169	4154	5232	6423	7747	9225
	2 P absorbée	(W)				2781	3167	3555	3950	4356	4777
	3 I absorbée	(A)				13.5	15.0	16.6	18.3	20.0	21.9

50 Hz R404A											
 N°226LT-F											
4 T condensation	5 T évaporation	(°C)	-25	-20	-15	-10	-5	0	5	10	15
30	1 P frigorifique	(Watt)	3057	4063	5243	6616	8201	10017	12083	14417	17039
	2 P absorbée	(W)	1905	2151	2396	2646	2904	3174	3461	3768	4101
	3 I absorbée	(A)	10.4	11.2	12.2	13.2	14.3	15.5	16.8	18.1	19.6
40	1 P frigorifique	(Watt)	2401	3340	4401	5604	6967	8509	10250	12207	14400
	2 P absorbée	(W)	1949	2242	2531	2820	3112	3413	3725	4054	4404
	3 I absorbée	(A)	10.5	11.5	12.6	13.7	14.9	16.2	17.6	19.1	20.6
50	1 P frigorifique	(Watt)		2494	3445	4486	5635	6912	8335	9924	11696
	2 P absorbée	(W)		2253	2592	2926	3260	3598	3943	4301	4675
	3 I absorbée	(A)		11.6	12.8	14.1	15.4	16.8	18.3	19.9	21.6
60	1 P frigorifique	(Watt)			2344	3231	4174	5194	6308	7535	8895
	2 P absorbée	(W)			2556	2943	3325	3707	4093	4486	4892
	3 I absorbée	(A)			12.9	14.3	15.8	17.3	18.9	20.6	22.4

1 = cooling capacity 2 = power input 3 = current 4 = condensing temperature 5 = evaporating temperature

Nota : Tecumseh se réserve le droit de modifier les informations contenues dans ce document sans préavis.
Note : Tecumseh reserves the right to change information contained in this document without notification.

© 2023 Tecumseh Products Company
All rights reserved



Tecumseh

FH4540Z	Tension FZ : 220 - 240V 1~ 50 Hz
----------------	---

Les performances sont données dans les conditions EN12900_HP :	Gaz aspirés :	20.0 °C
Condition Dew	Sous refroidissement :	0.0 K
The performance data are in EN12900_HP conditions :	Return gas :	20.0 °C
Dew Condition	Subcooling :	0.0 K

50 Hz R448A (*)											
											N°2854
4 T condensation	5 T évaporation	(°C)	-25	-20	-15	-10	-5	0	5	10	15
30	1 P frigorifique	(Watt)	2527	3480	4615	5957	7526	9347	11441	13832	16543
	2 P absorbée	(W)	1677	1897	2123	2358	2604	2864	3141	3436	3753
	3 I absorbée	(A)	9.11	9.90	10.8	11.8	12.8	14.0	15.2	16.5	17.9
40	1 P frigorifique	(Watt)		2876	3917	5120	6507	8101	9926	12002	14355
	2 P absorbée	(W)		1987	2252	2523	2801	3090	3391	3707	4041
	3 I absorbée	(A)		10.2	11.2	12.3	13.4	14.7	16.0	17.5	18.9
50	1 P frigorifique	(Watt)			3122	4199	5417	6797	8363	10138	12144
	2 P absorbée	(W)			2311	2631	2955	3286	3626	3977	4343
	3 I absorbée	(A)			11.4	12.7	14.0	15.4	16.9	18.4	20.1
60	1 P frigorifique	(Watt)				3176	4236	5415	6735	8220	9893
	2 P absorbée	(W)				2641	3025	3412	3805	4205	4616
	3 I absorbée	(A)				12.8	14.3	15.9	17.6	19.3	21.2

50 Hz R449A (*)											
											N°2244
4 T condensation	5 T évaporation	(°C)	-25	-20	-15	-10	-5	0	5	10	15
30	1 P frigorifique	(Watt)	2527	3480	4615	5957	7526	9346	11441	13832	16543
	2 P absorbée	(W)	1677	1897	2123	2358	2604	2864	3141	3436	3753
	3 I absorbée	(A)	9.11	9.90	10.8	11.8	12.8	14.0	15.2	16.5	17.9
40	1 P frigorifique	(Watt)		2876	3917	5120	6507	8101	9926	12002	14355
	2 P absorbée	(W)		1987	2252	2523	2801	3090	3391	3707	4041
	3 I absorbée	(A)		10.2	11.2	12.3	13.4	14.7	16.0	17.5	18.9
50	1 P frigorifique	(Watt)			3122	4199	5417	6797	8363	10138	12144
	2 P absorbée	(W)			2311	2631	2955	3286	3626	3977	4343
	3 I absorbée	(A)			11.4	12.7	14.0	15.4	16.9	18.4	20.1
60	1 P frigorifique	(Watt)				3176	4236	5415	6735	8220	9893
	2 P absorbée	(W)				2641	3025	3412	3805	4205	4616
	3 I absorbée	(A)				12.8	14.3	15.9	17.6	19.3	21.2

1 = cooling capacity 2 = power input 3 = current 4 = condensing temperature 5 = evaporating temperature

(*) Veuillez vous référer strictement aux Recommandations d'Utilisation et Bulletins Marketing Tecumseh du fait de la température de refoulement élevée pour les applications LBP.
 (*) Due to very high discharge temperature especially on LBP conditions, please strictly refer to Tecumseh Guidelines & Marketing Bulletin when using this refrigerant.

Nota : Tecumseh se réserve le droit de modifier les informations contenues dans ce document sans préavis.
Note : Tecumseh reserves the right to change information contained in this document without notification.

© 2023 Tecumseh Products Company
All rights reserved