



Compressor  
Voltage Code : KZ

# TAG4534Y

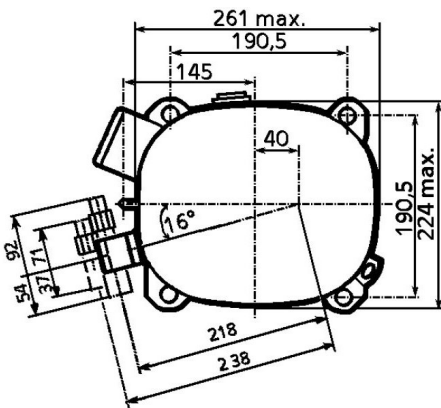
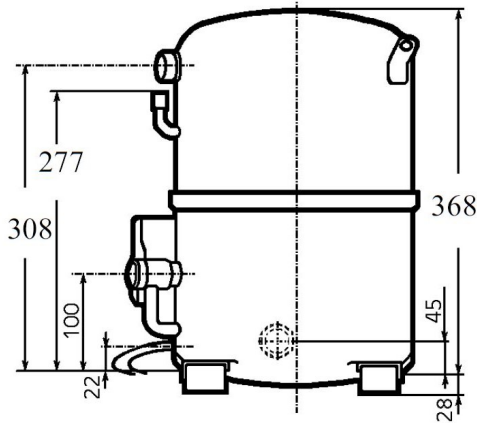
High Temp. Commercial (HP)

220V 3~ 50Hz / 220V 3~ 60 Hz

R134a

AGB4534YKZ

Conditions	Frequency	Nominal Cooling Capacity		Sound Power ISO3745 / ISO 3743-1
		Watts	BTU/h	
EN12900_HP / R134a	50 Hz / 60 Hz	7337 / 8635	25020 / 29446	77 dBA



<b>Displacement (cc)</b>	100,7
<b>Net Weight (Kg)</b>	44.0
<b>Oil Quantity (cc)</b>	1760.0
<b>Oil Type</b>	Polyolester
<b>Expansion Device</b>	Capillary_Tube/Expansion_Valve
<b>Cooling</b>	Fan
<b>Main Winding (Ohm)</b>	0.9
<b>Current</b>	
RLA (A)	10.4   10
MCC (A)	24   25
LRA (A)	103   99
<b>Electrical Equipment</b>	TRI
<b>Overload</b>	Interne
<b>Refrigerating connection for</b>	
Suction Tube	22.2 (7/8")
Discharge Tube	15.9 (5/8")
Process Tube	6.35 (1/4")

\* EN12900\_HP : T°Cond. 50.0°C / T°Evap. 5.0°C / T°Return gas temp.. 20.0°C  
T°Subcooling. 0.0K

Certificates :



Note : Tecumseh reserves the right to change information contained in this document without notification.



**Tecumseh**

<b>TAG4534Y</b>	<b>Tension KZ : 220V 3~ 50Hz / 220V 3~ 60 Hz</b>
-----------------	--

Les performances sont données dans les <b>conditions EN12900_HP</b> :	Gaz aspirés :	20.0 °C
Condition Dew	Sous refroidissement :	0.0 K
The performance data are in <b>EN12900_HP conditions</b> :	Return gas :	20.0 °C
Dew Condition	Subcooling :	0.0 K

© 2023 Tecumseh Products Company  
All rights reserved

### 50 Hz R134a

**N°217EU-K**

4   T condensation	5   T évaporation	(°C)	-25	-20	-15	-10	-5	0	5	10	15
<b>30</b>	1   P frigorifique	(Watt)	1673	2368	3368	4659	6228	8064	10154	12486	15049
	2   P absorbée	(W)	947	1263	1539	1774	1969	2124	2238	2313	2346
	3   I absorbée	(A)	5.71	6.67	7.54	8.32	9.02	9.63	10.2	10.6	11.0
<b>40</b>	1   P frigorifique	(Watt)	1372	1942	2793	3913	5287	6901	8744	10802	13062
	2   P absorbée	(W)	921	1249	1549	1819	2061	2273	2457	2612	2738
	3   I absorbée	(A)	5.70	6.65	7.56	8.42	9.25	10.0	10.8	11.5	12.1
<b>50</b>	1   P frigorifique	(Watt)		1512	2216	3165	4344	5739	7337	9123	11082
	2   P absorbée	(W)		1236	1559	1865	2153	2423	2676	2911	3129
	3   I absorbée	(A)		6.64	7.58	8.52	9.47	10.4	11.4	12.4	13.3
<b>60</b>	1   P frigorifique	(Watt)			1636	2415	3401	4579	5934	7450	9113
	2   P absorbée	(W)			1570	1910	2245	2573	2895	3211	3521
	3   I absorbée	(A)			7.60	8.62	9.70	10.8	12.0	13.2	14.5

### 60 Hz R134a

**N°217EU-K**

4   T condensation	5   T évaporation	(°C)	-25	-20	-15	-10	-5	0	5	10	15
<b>30</b>	1   P frigorifique	(Watt)	1949	2809	4011	5540	7383	9524	11951	14650	17607
	2   P absorbée	(W)	944	1325	1667	1968	2229	2451	2633	2774	2876
	3   I absorbée	(A)	7.37	7.78	8.15	8.45	8.70	8.89	9.03	9.11	9.14
<b>40</b>	1   P frigorifique	(Watt)	1593	2301	3327	4653	6266	8151	10291	12674	15283
	2   P absorbée	(W)	926	1314	1678	2018	2333	2624	2890	3133	3351
	3   I absorbée	(A)	7.31	7.75	8.17	8.56	8.92	9.26	9.58	9.87	10.1
<b>50</b>	1   P frigorifique	(Watt)		1790	2639	3764	5150	6778	8635	10704	12968
	2   P absorbée	(W)		1303	1690	2068	2437	2797	3149	3492	3826
	3   I absorbée	(A)		7.72	8.19	8.66	9.14	9.63	10.1	10.6	11.1
<b>60</b>	1   P frigorifique	(Watt)			1948	2873	4032	5408	6984	8742	10665
	2   P absorbée	(W)			1702	2118	2541	2970	3407	3851	4301
	3   I absorbée	(A)			8.21	8.76	9.36	9.99	10.7	11.4	12.1

1 = cooling capacity 2 = power input 3 = current 4 = condensing temperature 5 = evaporating temperature

**Nota : Tecumseh se réserve le droit de modifier les informations contenues dans ce document sans préavis.**

**Note : Tecumseh reserves the right to change information contained in this document without notification.**