



Compressor
Voltage Code : KZ

TAG4537Y

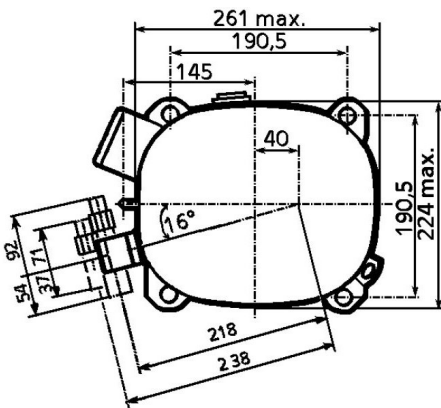
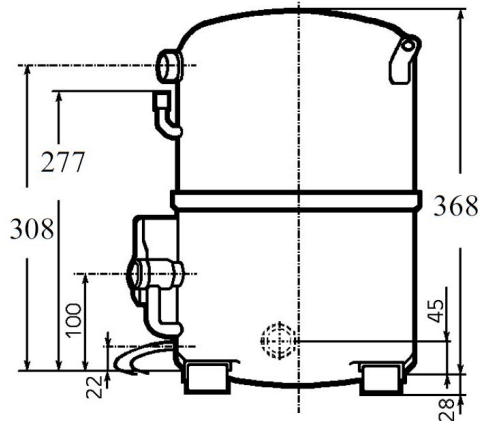
High Temp. Commercial (HP)

220V 3~ 50Hz / 220V 3~ 60 Hz

R134a

AGB4537YKZ

Conditions	Frequency	Nominal Cooling Capacity		Sound Power ISO3745 / ISO 3743-1
		Watts	BTU/h	
EN12900_HP / R134a	50 Hz / 60 Hz	8301 / 9770	28306 / 33315	74 dBA



Displacement (cc)	112,5
Net Weight (Kg)	44.0
Oil Quantity (cc)	1760.0
Oil Type	Polyolester
Expansion Device	Capillary_Tube/Expansion_Valve
Cooling	Fan
Main Winding (Ohm)	0.9
Current	
RLA (A)	12 12
MCC (A)	24 25
LRA (A)	103 99
Electrical Equipment	TRI
Overload	Interne
Refrigerating connection for	
Suction Tube	22.2 (7/8")
Discharge Tube	15.9 (5/8")
Process Tube	6.35 (1/4")

* EN12900_HP : T°Cond. 50.0°C / T°Evap. 5.0°C / T°Return gas temp.. 20.0°C
T°Subcooling. 0.0K

Certificates :



Note : Tecumseh reserves the right to change information contained in this document without notification.



Tecumseh

TAG4537Y	Tension KZ : 220V 3~ 50Hz / 220V 3~ 60 Hz
-----------------	--

Les performances sont données dans les conditions EN12900_HP :	Gaz aspirés :	20.0 °C
Condition Dew	Sous refroidissement :	0.0 K
The performance data are in EN12900_HP conditions :	Return gas :	20.0 °C
Dew Condition	Subcooling :	0.0 K

© 2023 Tecumseh Products Company
All rights reserved

50 Hz R134a

N°217GU-K

4 T condensation	5 T évaporation	(°C)	-25	-20	-15	-10	-5	0	5	10	15
30	1 P frigorifique	(Watt)	2120	2860	3947	5368	7108	9152	11488	14101	16977
	2 P absorbée	(W)	1090	1441	1746	2005	2218	2385	2505	2580	2608
	3 I absorbée	(A)	5.44	6.63	7.71	8.68	9.54	10.3	10.9	11.5	11.9
40	1 P frigorifique	(Watt)	1738	2345	3274	4508	6033	7833	9893	12198	14735
	2 P absorbée	(W)	1059	1426	1758	2056	2321	2553	2750	2914	3044
	3 I absorbée	(A)	5.45	6.62	7.74	8.79	9.78	10.7	11.6	12.4	13.2
50	1 P frigorifique	(Watt)		1827	2597	3646	4957	6514	8301	10302	12501
	2 P absorbée	(W)		1410	1770	2108	2425	2721	2995	3248	3480
	3 I absorbée	(A)		6.61	7.76	8.89	10.0	11.1	12.3	13.4	14.4
60	1 P frigorifique	(Watt)			1917	2782	3881	5198	6714	8413	10278
	2 P absorbée	(W)			1782	2160	2529	2889	3240	3582	3916
	3 I absorbée	(A)			7.78	9.00	10.3	11.6	12.9	14.3	15.7

60 Hz R134a

N°217GU-K

4 T condensation	5 T évaporation	(°C)	-25	-20	-15	-10	-5	0	5	10	15
30	1 P frigorifique	(Watt)	2478	3394	4701	6384	8425	10810	13521	16544	19864
	2 P absorbée	(W)	1180	1577	1935	2256	2539	2784	2991	3161	3292
	3 I absorbée	(A)	7.93	8.43	8.87	9.26	9.59	9.86	10.1	10.2	10.3
40	1 P frigorifique	(Watt)	2025	2781	3899	5362	7151	9251	11644	14313	17241
	2 P absorbée	(W)	1161	1565	1949	2313	2656	2980	3284	3569	3833
	3 I absorbée	(A)	7.88	8.40	8.90	9.37	9.83	10.3	10.7	11.1	11.5
50	1 P frigorifique	(Watt)		2164	3093	4337	5876	7693	9770	12088	14628
	2 P absorbée	(W)		1554	1963	2370	2774	3177	3578	3977	4374
	3 I absorbée	(A)		8.37	8.92	9.49	10.1	10.7	11.3	11.9	12.6
60	1 P frigorifique	(Watt)			2283	3310	4601	6138	7902	9872	12029
	2 P absorbée	(W)			1977	2427	2893	3374	3872	4386	4916
	3 I absorbée	(A)			8.94	9.60	10.3	11.1	11.9	12.8	13.7

1 = cooling capacity 2 = power input 3 = current 4 = condensing temperature 5 = evaporating temperature

Nota : Tecumseh se réserve le droit de modifier les informations contenues dans ce document sans préavis.

Note : Tecumseh reserves the right to change information contained in this document without notification.