



Compressor
Voltage Code : KZ

TAG4543Y

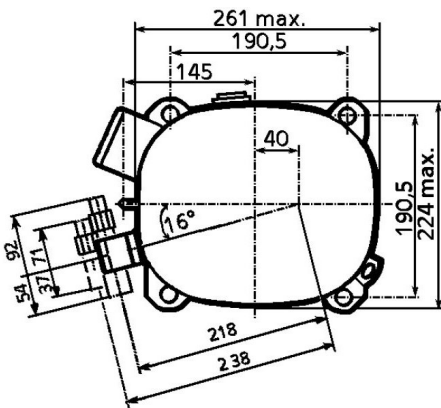
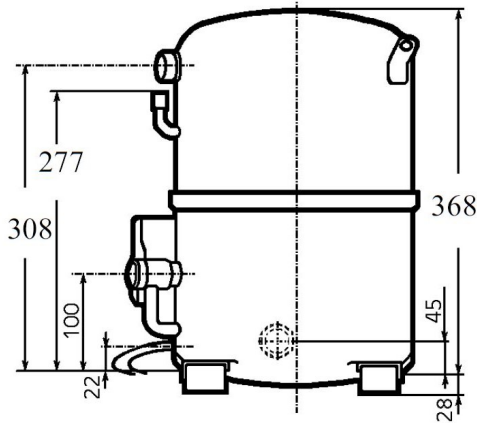
High Temp. Commercial (HP)

220V 3~ 50Hz / 220V 3~ 60 Hz

R134a

AGB4543YKZ

Conditions	Frequency	Nominal Cooling Capacity		Sound Power ISO3745 / ISO 3743-1
		Watts	BTU/h	
EN12900_HP / R134a	50 Hz / 60 Hz	8883 / 10454	30290 / 35648	74 dBA



Displacement (cc)	124,4
Net Weight (Kg)	44.0
Oil Quantity (cc)	1760.0
Oil Type	Polyolester
Expansion Device	Capillary_Tube/Expansion_Valve
Cooling	Fan
Main Winding (Ohm)	0.9
Current	
RLA (A)	13 13
MCC (A)	24 25
LRA (A)	103 99
Electrical Equipment	TRI
Overload	Interne
Refrigerating connection for	
Suction Tube	22.2 (7/8")
Discharge Tube	15.9 (5/8")
Process Tube	6.35 (1/4")

* EN12900_HP : T°Cond. 50.0°C / T°Evap. 5.0°C / T°Return gas temp.. 20.0°C
T°Subcooling. 0.0K

Certificates :



Note : Tecumseh reserves the right to change information contained in this document without notification.



Tecumseh

TAG4543Y	Tension KZ : 220V 3~ 50Hz / 220V 3~ 60 Hz
-----------------	--

Les performances sont données dans les conditions EN12900_HP :	Gaz aspirés :	20.0 °C
Condition Dew	Sous refroidissement :	0.0 K
The performance data are in EN12900_HP conditions :	Return gas :	20.0 °C
Dew Condition	Subcooling :	0.0 K

© 2023 Tecumseh Products Company
All rights reserved

50 Hz R134a

N°217JU-K

4 T condensation	5 T évaporation	(°C)	-25	-20	-15	-10	-5	0	5	10	15
30	1 P frigorifique	(Watt)	2569	3137	4150	5590	7439	9678	12290	15259	18566
	2 P absorbée	(W)	1102	1494	1840	2138	2390	2594	2752	2863	2927
	3 I absorbée	(A)	5.80	6.98	8.09	9.14	10.1	11.0	11.9	12.7	13.4
40	1 P frigorifique	(Watt)	2127	2581	3443	4693	6313	8283	10585	13200	16109
	2 P absorbée	(W)	1075	1479	1852	2193	2501	2777	3021	3233	3413
	3 I absorbée	(A)	5.83	6.98	8.12	9.25	10.4	11.5	12.6	13.7	14.8
50	1 P frigorifique	(Watt)		2021	2733	3795	5187	6890	8883	11147	13662
	2 P absorbée	(W)		1465	1865	2247	2612	2960	3291	3604	3900
	3 I absorbée	(A)		6.98	8.14	9.36	10.6	12.0	13.3	14.8	16.3
60	1 P frigorifique	(Watt)			2018	2894	4061	5498	7186	9102	11227
	2 P absorbée	(W)			1878	2302	2724	3144	3560	3975	4386
	3 I absorbée	(A)			8.16	9.47	10.9	12.4	14.1	15.8	17.7

60 Hz R134a

N°217JU-K

4 T condensation	5 T évaporation	(°C)	-25	-20	-15	-10	-5	0	5	10	15
30	1 P frigorifique	(Watt)	2999	3718	4942	6649	8819	11431	14465	17902	21723
	2 P absorbée	(W)	1274	1693	2085	2450	2788	3099	3384	3642	3873
	3 I absorbée	(A)	8.03	8.57	9.09	9.59	10.1	10.6	11.0	11.5	11.9
40	1 P frigorifique	(Watt)	2476	3057	4100	5583	7484	9783	12457	15486	18849
	2 P absorbée	(W)	1267	1686	2100	2510	2916	3319	3717	4111	4501
	3 I absorbée	(A)	8.02	8.55	9.11	9.70	10.3	11.0	11.7	12.4	13.2
50	1 P frigorifique	(Watt)		2390	3254	4514	6150	8137	10454	13078	15987
	2 P absorbée	(W)		1679	2116	2571	3045	3538	4050	4581	5131
	3 I absorbée	(A)		8.53	9.13	9.82	10.6	11.4	12.4	13.4	14.4
60	1 P frigorifique	(Watt)			2403	3443	4814	6493	8456	10680	13139
	2 P absorbée	(W)			2131	2632	3174	3758	4384	5051	5760
	3 I absorbée	(A)			9.16	9.93	10.8	11.9	13.0	14.3	15.7

1 = cooling capacity 2 = power input 3 = current 4 = condensing temperature 5 = evaporating temperature

Nota : Tecumseh se réserve le droit de modifier les informations contenues dans ce document sans préavis.

Note : Tecumseh reserves the right to change information contained in this document without notification.