



Compressor
Voltage Code : T

TAG4553Z

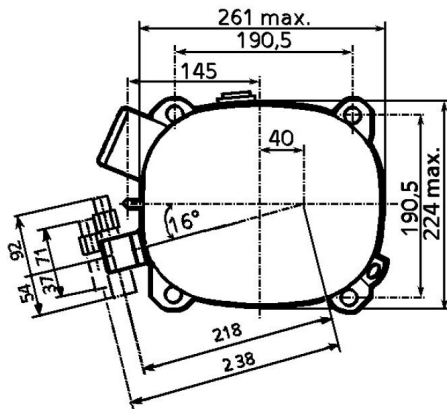
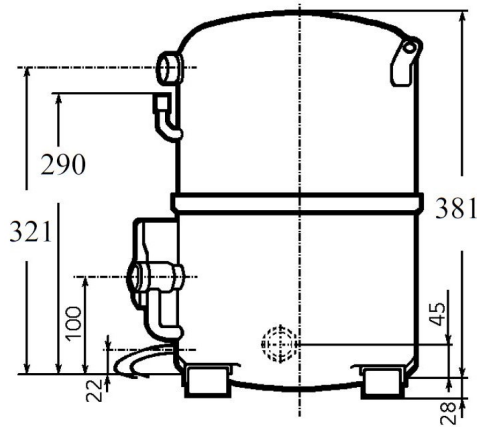
High Temp. Commercial (HP)

400V 3~ 50Hz / 440V 3~ 60 Hz

R452A / R404A / R449A

AGB4553ZTZ

Conditions	Frequency	Nominal Cooling Capacity		Sound Power ISO3745 / ISO 3743-1
		Watts	BTU/h	
EN12900 / R452A	50 Hz / 60 Hz	11127 / 13475	37944 / 45951	82 dBA
EN12900 / R404A	50 Hz / 60 Hz	11073 / 13412	37760 / 45735	82 dBA
EN12900 / R449A	50 Hz / 60 Hz	11402 / 13807	38879 / 47082	82 dBA



Displacement (cc)	100.7
Net Weight (Kg)	45.6
Oil Quantity (cc)	1960.0
Oil Type	Polyolester
Expansion Device	Capillary_Tube/Expansion_Valve
Cooling	Fan
Main Winding (Ohm)	3.6
Current	
RLA (A)	7.9 8.4
MCC (A)	14 14
LRA (A)	46 45
Electrical Equipment	TRI
Overload	Interne
Refrigerating connection for OD	
Suction Tube	22.2 (7/8")
Discharge Tube	15.9 (5/8")
Process Tube	6.35 (1/4")

* EN12900 : T°Cond. 50.0°C / T°Evap. 5.0°C / T°Return gas temp.. 20.0°C
T°Subcooling. 0.0K

Certificates :

Note : Tecumseh reserves the right to change information contained in this document without notification.



Tecumseh

TAG4553Z	Tension T : 400V 3~ 50Hz / 440V 3~ 60 Hz
-----------------	---

Les performances sont données dans les conditions EN12900 :	Gaz aspirés :	20.0 °C
Condition Dew	Sous refroidissement :	0.0 K
The performance data are in EN12900 conditions :	Return gas :	20.0 °C
Dew Condition	Subcooling :	0.0 K

© 2018 Tecumseh Products Company
All rights reserved

50 Hz R452A

N°2142

4 T condensation	5 T évaporation	(°C)	-25	-20	-15	-10	-5	0	5	10	15
30	1 P frigorifique	(Watt)	3436	4854	6540	8557	10964	13813	17149	21014	25441
	2 P absorbée	(W)	1979	2351	2689	2997	3282	3548	3803	4050	4297
	3 I absorbée	(A)	4.02	4.50	4.94	5.36	5.76	6.14	6.51	6.86	7.20
40	1 P frigorifique	(Watt)		3685	5137	6851	8885	11291	14114	17391	21151
	2 P absorbée	(W)		2287	2731	3141	3520	3875	4212	4536	4852
	3 I absorbée	(A)		4.38	4.97	5.53	6.08	6.60	7.11	7.61	8.10
50	1 P frigorifique	(Watt)			3721	5147	6823	8802	11127	13833	16940
	2 P absorbée	(W)			2612	3146	3643	4111	4554	4978	5388
	3 I absorbée	(A)			4.82	5.54	6.23	6.91	7.58	8.23	8.87
60	1 P frigorifique	(Watt)				3433	4767	6332	8171	10311	12767
	2 P absorbée	(W)				2949	3589	4192	4765	5313	5841
	3 I absorbée	(A)				5.32	6.18	7.02	7.85	8.66	9.46

60 Hz R452A

N°2142

4 T condensation	5 T évaporation	(°C)	-25	-20	-15	-10	-5	0	5	10	15
30	1 P frigorifique	(Watt)	4387	6152	8181	10530	13254	16399	20009	24119	28759
	2 P absorbée	(W)	2521	3018	3467	3882	4278	4669	5070	5494	5957
	3 I absorbée	(A)	4.43	4.95	5.43	5.90	6.34	6.76	7.16	7.54	7.92
40	1 P frigorifique	(Watt)		4669	6486	8559	10941	13679	16814	20378	24396
	2 P absorbée	(W)		2893	3483	4019	4515	4986	5446	5908	6388
	3 I absorbée	(A)		4.81	5.46	6.09	6.69	7.26	7.83	8.37	8.91
50	1 P frigorifique	(Watt)			4674	6464	8498	10822	13475	16486	19870
	2 P absorbée	(W)			3268	3976	4624	5225	5795	6347	6897
	3 I absorbée	(A)			5.30	6.09	6.86	7.61	8.33	9.05	9.75
60	1 P frigorifique	(Watt)				4261	5940	7841	10000	12440	15170
	2 P absorbée	(W)				3595	4446	5230	5961	6655	7325
	3 I absorbée	(A)				5.86	6.80	7.73	8.63	9.53	10.4

1 = cooling capacity 2 = power input 3 = current 4 = condensing temperature 5 = evaporating temperature

Nota : Tecumseh se réserve le droit de modifier les informations contenues dans ce document sans préavis.

Note : Tecumseh reserves the right to change information contained in this document without notification.



Tecumseh

TAG4553Z	Tension T : 400V 3~ 50Hz / 440V 3~ 60 Hz
-----------------	---

Les performances sont données dans les conditions EN12900 :	Gaz aspirés :	20.0 °C
Condition Dew	Sous refroidissement :	0.0 K
The performance data are in EN12900 conditions :	Return gas :	20.0 °C
Dew Condition	Subcooling :	0.0 K

50 Hz R404A											
											N°227EU-T
4 T condensation	5 T évaporation	(°C)	-25	-20	-15	-10	-5	0	5	10	15
30	1 P frigorifique	(Watt)	3793	5224	6947	9005	11443	14304	17630	21467	25856
	2 P absorbée	(W)	2111	2490	2837	3155	3450	3726	3988	4240	4486
	3 I absorbée	(A)	4.29	4.76	5.21	5.64	6.06	6.45	6.82	7.18	7.51
40	1 P frigorifique	(Watt)	2636	3915	5403	7143	9180	11556	14315	17501	21157
	2 P absorbée	(W)	1967	2455	2904	3317	3701	4058	4394	4714	5021
	3 I absorbée	(A)	4.10	4.70	5.28	5.84	6.39	6.92	7.42	7.91	8.38
50	1 P frigorifique	(Watt)		2598	3868	5306	6957	8865	11073	13625	16563
	2 P absorbée	(W)		2254	2825	3355	3847	4306	4737	5144	5532
	3 I absorbée	(A)		4.49	5.21	5.90	6.58	7.24	7.88	8.50	9.10
60	1 P frigorifique	(Watt)			2364	3517	4799	6255	7928	9861	12098
	2 P absorbée	(W)			2565	3230	3851	4432	4978	5494	5983
	3 I absorbée	(A)			5.00	5.83	6.64	7.43	8.20	8.95	9.69

60 Hz R404A											
											N°227EU-T
4 T condensation	5 T évaporation	(°C)	-25	-20	-15	-10	-5	0	5	10	15
30	1 P frigorifique	(Watt)	4838	6625	8693	11082	13831	16980	20570	24639	29229
	2 P absorbée	(W)	2688	3196	3658	4087	4498	4903	5317	5751	6220
	3 I absorbée	(A)	4.72	5.24	5.73	6.21	6.66	7.09	7.51	7.90	8.27
40	1 P frigorifique	(Watt)	3301	4963	6824	8924	11302	14000	17055	20509	24401
	2 P absorbée	(W)	2440	3105	3703	4246	4748	5222	5682	6140	6611
	3 I absorbée	(A)	4.50	5.17	5.81	6.43	7.03	7.61	8.16	8.70	9.22
50	1 P frigorifique	(Watt)		3215	4861	6663	8663	10899	13412	16241	19427
	2 P absorbée	(W)		2753	3535	4240	4882	5473	6028	6560	7081
	3 I absorbée	(A)		4.94	5.73	6.49	7.24	7.97	8.67	9.35	10.0
60	1 P frigorifique	(Watt)			2873	4370	5981	7748	9709	11905	14375
	2 P absorbée	(W)			3026	3942	4772	5530	6228	6881	7502
	3 I absorbée	(A)			5.50	6.41	7.30	8.17	9.02	9.85	10.7

1 = cooling capacity 2 = power input 3 = current 4 = condensing temperature 5 = evaporating temperature

Nota : Tecumseh se réserve le droit de modifier les informations contenues dans ce document sans préavis.

Note : Tecumseh reserves the right to change information contained in this document without notification.

© 2018 Tecumseh Products Company
All rights reserved



Tecumseh

TAG4553Z	Tension T : 400V 3~ 50Hz / 440V 3~ 60 Hz
-----------------	---

Les performances sont données dans les **conditions EN12900** :
 Condition Dew
 The performance data are in **EN12900 conditions** :
 Dew Condition

Gaz aspirés : 20.0 °C
 Sous refroidissement : 0.0 K
 Return gas : 20.0 °C
 Subcooling : 0.0 K

© 2018 Tecumseh Products Company
All rights reserved

50 Hz R449A (*)

N°2258

4 T condensation	5 T évaporation	(°C)	-25	-20	-15	-10	-5	0	5	10	15
30	1 P frigorifique	(Watt)	2894	4267	5940	7982	10464	13447	16989	21146	25965
	2 P absorbée	(W)	1790	2086	2381	2670	2950	3215	3462	3686	3884
	3 I absorbée	(A)	3.64	3.99	4.37	4.77	5.18	5.56	5.93	6.24	6.50
40	1 P frigorifique	(Watt)		3270	4708	6447	8553	11090	14116	17681	21829
	2 P absorbée	(W)		2118	2473	2829	3183	3529	3863	4181	4478
	3 I absorbée	(A)		4.05	4.50	4.98	5.49	6.01	6.52	7.02	7.47
50	1 P frigorifique	(Watt)			3484	4957	6726	8856	11402	14412	17925
	2 P absorbée	(W)			2483	2908	3336	3763	4185	4598	4998
	3 I absorbée	(A)			4.58	5.12	5.71	6.33	6.96	7.60	8.22
60	1 P frigorifique	(Watt)				3493	4965	6724	8827	11318	14230
	2 P absorbée	(W)				2895	3399	3909	4420	4929	5431
	3 I absorbée	(A)				5.22	5.86	6.55	7.28	8.04	8.80

60 Hz R449A (*)

N°2258

4 T condensation	5 T évaporation	(°C)	-25	-20	-15	-10	-5	0	5	10	15
30	1 P frigorifique	(Watt)	3696	5409	7429	9822	12648	15964	19822	24271	29353
	2 P absorbée	(W)	2279	2677	3070	3459	3845	4230	4615	5000	5386
	3 I absorbée	(A)	4.01	4.39	4.81	5.25	5.69	6.12	6.52	6.87	7.15
40	1 P frigorifique	(Watt)		4142	5944	8055	10534	13438	16818	20718	25176
	2 P absorbée	(W)		2679	3153	3621	4083	4541	4995	5446	5895
	3 I absorbée	(A)		4.46	4.95	5.48	6.04	6.61	7.18	7.72	8.22
50	1 P frigorifique	(Watt)			4377	6225	8377	10888	13807	17177	21028
	2 P absorbée	(W)			3107	3674	4233	4783	5326	5864	6397
	3 I absorbée	(A)			5.03	5.63	6.28	6.96	7.66	8.36	9.05
60	1 P frigorifique	(Watt)				4344	6189	8326	10803	13657	16915
	2 P absorbée	(W)				3539	4213	4877	5530	6175	6812
	3 I absorbée	(A)				5.74	6.44	7.21	8.01	8.84	9.68

1 = cooling capacity 2 = power input 3 = current 4 = condensing temperature 5 = evaporating temperature

(*) Veuillez vous référer strictement aux Recommandations d'Utilisation et Bulletins Marketing Tecumseh du fait de la température de refoulement élevée pour les applications LBP.
 (*) Due to very high discharge temperature especially on LBP conditions, please strictly refer to Tecumseh Guidelines & Marketing Bulletin when using this refrigerant.

Nota : Tecumseh se réserve le droit de modifier les informations contenues dans ce document sans préavis.

Note : Tecumseh reserves the right to change information contained in this document without notification.