



Compressor  
Voltage Code : TZ

TAJ4461Y-TZ

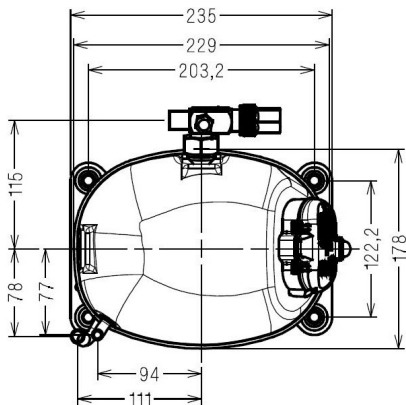
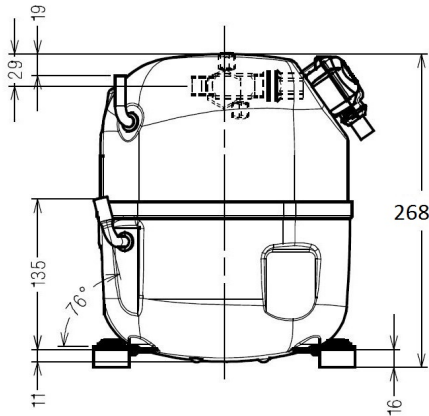
High Temp. Commercial (HP)

400V 3~ 50Hz / 440V 3~ 60 Hz

R134a

AJ4461Y-TZ1C

Conditions	Frequency	Nominal Cooling Capacity		Sound Power ISO3745 / ISO 3743-1
		Watts	BTU/h	
EN12900_HP / R134a	50 Hz / 60 Hz	1482 / 1740	5054 / 5935	56 dBA



<b>Displacement (cc)</b>	18,3
<b>Net Weight (Kg)</b>	17.8
<b>Oil Quantity (cc)</b>	475.0
<b>Oil Type</b>	Polyolester
<b>Expansion Device</b>	Capillary_Tube/Expansion_Valve
<b>Cooling</b>	Fan
<b>Main Winding (Ohm)</b>	21.0
<b>Current</b>	
RLA (A)	1.3   1.2
MCC (A)	2.3   2.5
LRA (A)	9.4   9.8
<b>Electrical Equipment</b>	TRI
<b>Overload</b>	Interne
<b>Refrigerating connection for</b>	
Suction Tube	12.7 (1/2")
Discharge Tube	6.35 (1/4")
Process Tube	6.35 (1/4")

\* EN12900\_HP : T°Cond. 50.0°C / T°Evap. 5.0°C / T°Return gas temp.. 20.0°C  
T°Subcooling. 0.0K

Certificates :



Note : Tecumseh reserves the right to change information contained in this document without notification.



**Tecumseh**

<b>TAJ4461Y-TZ</b>	<b>Tension TZ : 400V 3~ 50Hz / 440V 3~ 60 Hz</b>
--------------------	--

Les performances sont données dans les **conditions EN12900\_HP** :  
 Condition Dew  
 The performance data are in **EN12900\_HP conditions** :  
 Dew Condition

Gaz aspirés : 20.0 °C  
 Sous refroidissement : 0.0 K  
 Return gas : 20.0 °C  
 Subcooling : 0.0 K

<b>50 Hz R134a</b>											
<b>N°214EU-TZ</b>											
4   T condensation	5   T évaporation	(°C)	-25	-20	-15	-10	-5	0	5	10	15
<b>30</b>	1   P frigorifique	(Watt)	436	590	779	1010	1290	1627	2026	2496	3043
	2   P absorbée	(W)	282	320	355	388	419	449	479	508	538
	3   I absorbée	(A)	1.07	1.08	1.10	1.12	1.14	1.16	1.18	1.20	1.21
<b>40</b>	1   P frigorifique	(Watt)	353	494	663	866	1112	1406	1755	2168	2650
	2   P absorbée	(W)	284	332	377	420	460	499	538	575	612
	3   I absorbée	(A)	1.03	1.06	1.10	1.13	1.17	1.20	1.24	1.27	1.31
<b>50</b>	1   P frigorifique	(Watt)		394	543	719	930	1182	1482	1838	2255
	2   P absorbée	(W)		333	389	443	495	544	593	640	687
	3   I absorbée	(A)		1.05	1.10	1.15	1.20	1.25	1.30	1.35	1.40
<b>60</b>	1   P frigorifique	(Watt)			421	571	748	958	1210	1509	1863
	2   P absorbée	(W)			389	455	520	582	642	700	758
	3   I absorbée	(A)			1.09	1.16	1.23	1.30	1.36	1.43	1.50

<b>60 Hz R134a</b>											
<b>N°214EU-TZ</b>											
4   T condensation	5   T évaporation	(°C)	-25	-20	-15	-10	-5	0	5	10	15
<b>30</b>	1   P frigorifique	(Watt)	508	709	944	1221	1544	1919	2354	2854	3424
	2   P absorbée	(W)	333	387	433	475	515	556	602	655	717
	3   I absorbée	(A)	0.98	1.01	1.04	1.08	1.11	1.15	1.19	1.24	1.29
<b>40</b>	1   P frigorifique	(Watt)	366	557	776	1030	1323	1663	2055	2506	3021
	2   P absorbée	(W)	310	387	453	512	565	616	667	722	783
	3   I absorbée	(A)	0.96	1.00	1.05	1.11	1.16	1.22	1.28	1.35	1.41
<b>50</b>	1   P frigorifique	(Watt)		396	598	827	1089	1392	1740	2141	2600
	2   P absorbée	(W)		351	445	527	600	668	732	797	864
	3   I absorbée	(A)		0.98	1.05	1.12	1.19	1.27	1.35	1.43	1.52
<b>60</b>	1   P frigorifique	(Watt)			416	619	850	1114	1417	1766	2167
	2   P absorbée	(W)			395	508	609	701	786	867	947
	3   I absorbée	(A)			1.01	1.10	1.20	1.29	1.39	1.50	1.60

1 = cooling capacity 2 = power input 3 = current 4 = condensing temperature 5 = evaporating temperature

**Nota : Tecumseh se réserve le droit de modifier les informations contenues dans ce document sans préavis.**  
**Note : Tecumseh reserves the right to change information contained in this document without notification.**

© 2023 Tecumseh Products Company  
All rights reserved