



Compressor
Voltage Code : FZ

THB3410Y

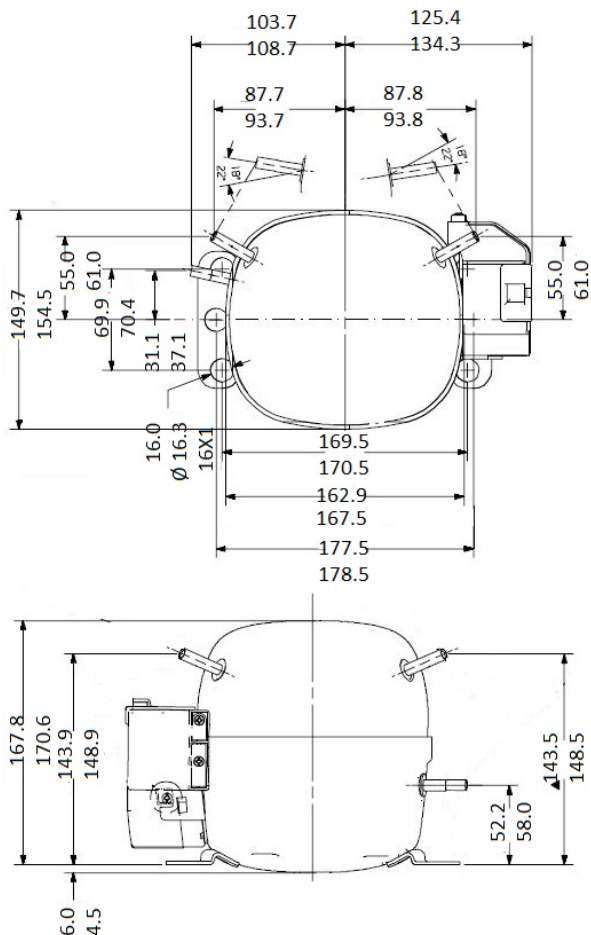
High Temp. Commercial (HP)

220 - 240V 1~ 50 Hz

R134a

THB3410YFZ

Conditions	Frequency	Nominal Cooling Capacity		Sound Power ISO3745 / ISO 3743-1
		Watts	BTU/h	
EN12900_HP / R134a	50 Hz	219	747	38 dBA



* EN12900_HP : T°Cond. 50.0°C / T°Evap. 5.0°C / T°Return gas temp.. 20.0°C
T°Subcooling. 0.0K

Certificates :



Displacement (cc)	2,72
Net Weight (Kg)	5.95
Oil Quantity (cc)	250.0
Oil Type	Polyolester
Expansion Device	Capillary_Tube
Cooling	Static
Main Winding (Ohm)	27.8
Start Winding (Ohm)	34.8
Current	
RLA (A)	0.7
MCC (A)	1.1
LRA (A)	5.54
Electrical Equipment	PTCSIR
Overload	MRP419HZ
Time Check	7.5s - 14s / 4.15 A
Open Temp	120° C
Close Temp	61° C
Optional	T0434
Optional	50 µF / 250 V
PTC	MSDA1
Resistance	12 Ohms
Refrigerating connection for	
Suction Tube	6.35 (1/4")
Discharge Tube	6.35 (1/4")
Process Tube	4.76 (3/16")

Note : Tecumseh reserves the right to change information contained in this document without notification.



Tecumseh

THB3410Y	Tension FZ : 220 - 240V 1~ 50 Hz
-----------------	---

Les performances sont données dans les **conditions EN12900_HP** :
 Condition Dew
 The performance data are in **EN12900_HP conditions** :
 Dew Condition

Gaz aspirés : 20.0 °C
 Sous refroidissement : 0.0 K
 Return gas : 20.0 °C
 Subcooling : 0.0 K

50 Hz R134a											
											N°211CB-F
4 T condensation	5 T évaporation	(°C)	-25	-20	-15	-10	-5	0	5	10	15
30	1 P frigorifique	(Watt)	93.5	107	130	161	201	248	303	365	434
	2 P absorbée	(W)	63.1	70.5	76.9	82.1	86.2	89.2	91.0	91.8	91.4
	3 I absorbée	(A)	0.58	0.60	0.61	0.62	0.62	0.62	0.62	0.62	0.61
40	1 P frigorifique	(Watt)	76.7	88.3	108	136	171	213	261	316	377
	2 P absorbée	(W)	61.6	69.9	77.4	84.2	90.2	95.5	100.0	104	107
	3 I absorbée	(A)	0.58	0.60	0.61	0.62	0.64	0.65	0.66	0.66	0.67
50	1 P frigorifique	(Watt)		69.1	85.8	110	140	177	219	267	320
	2 P absorbée	(W)		69.3	78.0	86.3	94.2	102	109	116	122
	3 I absorbée	(A)		0.59	0.61	0.63	0.65	0.67	0.69	0.72	0.74
60	1 P frigorifique	(Watt)			63.5	83.6	110	141	177	218	263
	2 P absorbée	(W)			78.5	88.4	98.2	108	118	128	137
	3 I absorbée	(A)			0.61	0.64	0.67	0.70	0.73	0.77	0.81

© 2023 Tecumseh Products Company
All rights reserved

1 = cooling capacity 2 = power input 3 = current 4 = condensing temperature 5 = evaporating temperature

Nota : Tecumseh se réserve le droit de modifier les informations contenues dans ce document sans préavis.
Note : Tecumseh reserves the right to change information contained in this document without notification.