



Compressor
Voltage Code : FZ

THB3413YFZ

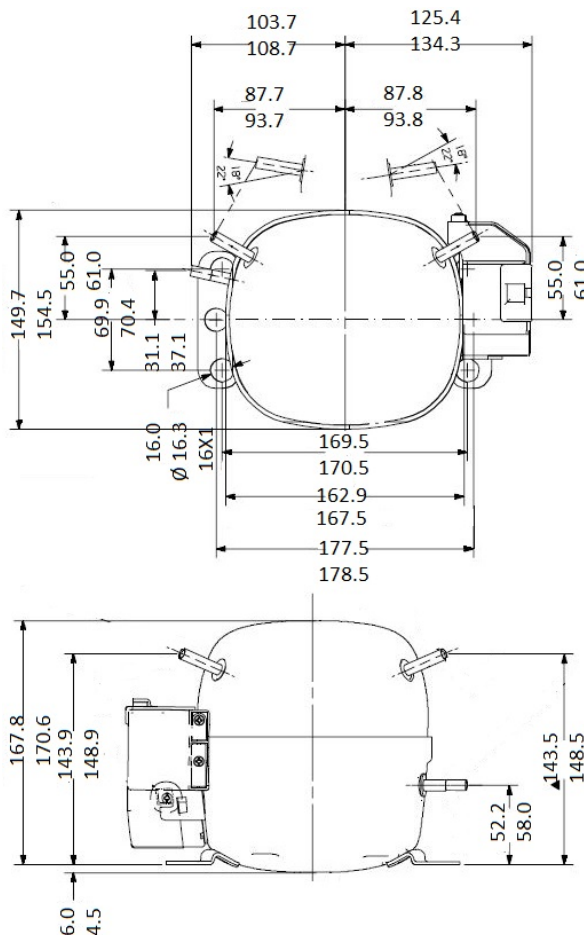
High Temp. Commercial (HP)

220 - 240V 1~ 50 Hz

R134a / R513A

THB3413YFZ

Conditions	Frequency	Nominal Cooling Capacity		Sound Power ISO3745 / ISO 3743-1
		Watts	BTU/h	
EN12900_HP / R134a	50 Hz	291	992	
EN12900_HP / R513A	50 Hz	273	930	



Displacement (cc)	3,4
Net Weight (Kg)	7.5
Oil Quantity (cc)	243.0
Oil Type	Polyolester
Expansion Device	Capillary_Tube
Cooling	Static
Main Winding (Ohm)	17.65
Start Winding (Ohm)	28.15
Current	
RLA (A)	1
LRA (A)	7
Electrical Equipment	PTCSIR
Overload	T26809
Time Check	6.5s - 16s / 5.5 A
Open Temp	95° C
Close Temp	52° C
PTC	8EA17C2
Resistance	20 Ohms
Optional	SR273102
Refrigerating connection for	
Suction Tube	6.35 (1/4")
Discharge Tube	6.35 (1/4")
Process Tube	4.76 (3/16")

* EN12900_HP : T°Cond. 50.0°C / T°Evap. 5.0°C / T°Return gas temp.. 20.0°C
T°Subcooling. 0.0K

Certificates :



Note : Tecumseh reserves the right to change information contained in this document without notification.



Tecumseh

THB3413YFZ	Tension FZ : 220 - 240V 1~ 50 Hz
-------------------	---

Les performances sont données dans les **conditions EN12900_HP** :
 Condition Dew
 The performance data are in **EN12900_HP conditions** :
 Dew Condition

Gaz aspirés : 20.0 °C
 Sous refroidissement : 0.0 K
 Return gas : 20.0 °C
 Subcooling : 0.0 K

© 2023 Tecumseh Products Company
All rights reserved

50 Hz R134a

N°211EB-F

4 T condensation	5 T évaporation	(°C)	-25	-20	-15	-10	-5	0	5	10	15
30	1 P frigorifique	(Watt)	136	153	181	221	271	332	402	482	571
	2 P absorbée	(W)	81.7	91.9	101	108	114	119	122	124	125
	3 I absorbée	(A)	0.73	0.75	0.77	0.79	0.80	0.81	0.81	0.81	0.80
40	1 P frigorifique	(Watt)	111	126	151	186	230	284	347	417	496
	2 P absorbée	(W)	80.0	91.1	101	111	120	127	134	141	146
	3 I absorbée	(A)	0.72	0.75	0.78	0.80	0.82	0.84	0.86	0.88	0.89
50	1 P frigorifique	(Watt)		98.1	120	150	189	236	291	353	421
	2 P absorbée	(W)		90.3	102	114	125	136	146	157	167
	3 I absorbée	(A)		0.75	0.78	0.81	0.84	0.87	0.91	0.95	0.98
60	1 P frigorifique	(Watt)			88.4	114	148	188	235	288	346
	2 P absorbée	(W)			103	116	130	144	158	173	188
	3 I absorbée	(A)			0.78	0.82	0.86	0.91	0.96	1.01	1.07

50 Hz R513A

N°3193

4 T condensation	5 T évaporation	(°C)	-25	-20	-15	-10	-5	0	5	10	15
30	1 P frigorifique	(Watt)	163	177	202	237	281	332	389	451	517
	2 P absorbée	(W)	90.8	101	109	116	122	127	132	136	141
	3 I absorbée	(A)	0.81	0.82	0.84	0.85	0.85	0.86	0.87	0.89	0.91
40	1 P frigorifique	(Watt)	131	143	165	197	236	281	332	387	445
	2 P absorbée	(W)	87.5	99.0	109	118	126	134	142	150	158
	3 I absorbée	(A)	0.79	0.81	0.83	0.85	0.87	0.89	0.91	0.94	0.97
50	1 P frigorifique	(Watt)		110	129	155	189	229	273	320	369
	2 P absorbée	(W)		96.5	109	120	131	142	153	165	177
	3 I absorbée	(A)		0.80	0.83	0.86	0.89	0.92	0.95	0.99	1.04
60	1 P frigorifique	(Watt)			94.0	115	143	176	212	251	291
	2 P absorbée	(W)			108	122	136	151	165	181	197
	3 I absorbée	(A)			0.82	0.86	0.90	0.95	1.00	1.06	1.13

1 = cooling capacity 2 = power input 3 = current 4 = condensing temperature 5 = evaporating temperature

Nota : Tecumseh se réserve le droit de modifier les informations contenues dans ce document sans préavis.

Note : Tecumseh reserves the right to change information contained in this document without notification.