



Compressor
Voltage Code : FZ

THB3419YFZ

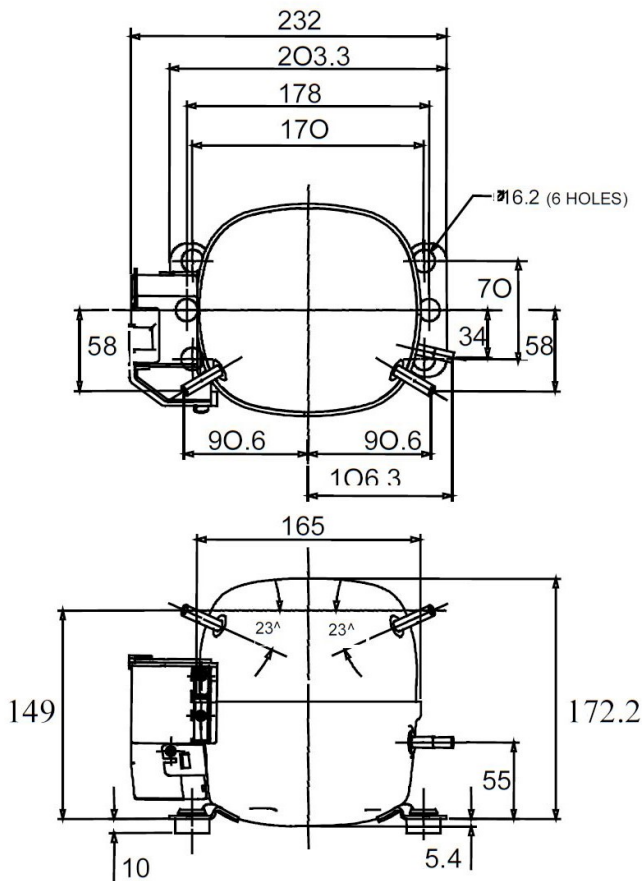
High Temp. Commercial (HP)

220 - 240V 1~ 50 Hz

R134a / R513A

THB3419YFZ

Conditions	Frequency	Nominal Cooling Capacity		Sound Power ISO3745 / ISO 3743-1
		Watts	BTU/h	
EN12900_HP / R134a	50 Hz	406	1386	
EN12900_HP / R513A	50 Hz	381	1298	



Displacement (cc)	5
Net Weight (Kg)	7.4
Oil Quantity (cc)	243.0
Oil Type	Polyolester
Expansion Device	Capillary_Tube
Cooling	Static
Main Winding (Ohm)	13.53
Start Winding (Ohm)	22.63
Current	
RLA (A)	1.4
LRA (A)	8.5
Electrical Equipment	PTCSIR
Overload	T8826
Time Check	6.5s - 16s / 7 A
Open Temp	110° C
Close Temp	52° C
PTC	8EA17C2
Resistance	20 Ohms
Optional	SR273102
Refrigerating connection for	
Suction Tube	6.35 (1/4")
Discharge Tube	6.35 (1/4")
Process Tube	4.76 (3/16")

* EN12900_HP : T°Cond. 50.0°C / T°Evap. 5.0°C / T°Return gas temp.. 20.0°C
T°Subcooling. 0.0K

Certificates :



Note : Tecumseh reserves the right to change information contained in this document without notification.



Tecumseh

THB3419YFZ	Tension FZ : 220 - 240V 1~ 50 Hz
-------------------	---

Les performances sont données dans les conditions EN12900_HP :	Gaz aspirés :	20.0 °C
Condition Dew	Sous refroidissement :	0.0 K
The performance data are in EN12900_HP conditions :	Return gas :	20.0 °C
Dew Condition	Subcooling :	0.0 K

50 Hz R134a											
											N°211JB-F
4 T condensation	5 T évaporation	(°C)	-25	-20	-15	-10	-5	0	5	10	15
30	1 P frigorifique	(Watt)	189	216	258	314	384	467	562	669	788
	2 P absorbée	(W)	113	127	140	151	161	170	177	183	187
	3 I absorbée	(A)	1.04	1.06	1.09	1.11	1.13	1.14	1.16	1.17	1.17
40	1 P frigorifique	(Watt)	154	178	214	264	326	399	484	579	684
	2 P absorbée	(W)	112	127	141	155	168	182	194	207	219
	3 I absorbée	(A)	1.03	1.06	1.09	1.12	1.16	1.19	1.23	1.26	1.30
50	1 P frigorifique	(Watt)		138	170	213	268	332	406	489	581
	2 P absorbée	(W)		126	142	159	176	194	212	231	250
	3 I absorbée	(A)		1.06	1.09	1.14	1.18	1.24	1.30	1.36	1.43
60	1 P frigorifique	(Watt)			126	163	209	265	329	400	478
	2 P absorbée	(W)			143	162	183	206	229	255	281
	3 I absorbée	(A)			1.10	1.15	1.21	1.28	1.37	1.46	1.56

50 Hz R513A											
											N°3205
4 T condensation	5 T évaporation	(°C)	-25	-20	-15	-10	-5	0	5	10	15
30	1 P frigorifique	(Watt)	227	250	288	337	398	467	543	626	713
	2 P absorbée	(W)	126	139	151	162	172	181	190	200	211
	3 I absorbée	(A)	1.15	1.17	1.18	1.19	1.20	1.22	1.25	1.28	1.32
40	1 P frigorifique	(Watt)	182	202	235	280	334	396	464	537	615
	2 P absorbée	(W)	122	137	152	165	178	192	206	221	237
	3 I absorbée	(A)	1.13	1.15	1.17	1.20	1.22	1.26	1.30	1.35	1.41
50	1 P frigorifique	(Watt)		155	183	221	268	322	381	444	510
	2 P absorbée	(W)		134	151	168	185	203	222	243	265
	3 I absorbée	(A)		1.13	1.17	1.20	1.25	1.30	1.36	1.43	1.52
60	1 P frigorifique	(Watt)			133	164	203	247	296	348	402
	2 P absorbée	(W)			150	171	192	215	239	266	295
	3 I absorbée	(A)			1.15	1.21	1.27	1.34	1.43	1.53	1.64

1 = cooling capacity 2 = power input 3 = current 4 = condensing temperature 5 = evaporating temperature

Nota : Tecumseh se réserve le droit de modifier les informations contenues dans ce document sans préavis.

Note : Tecumseh reserves the right to change information contained in this document without notification.

© 2023 Tecumseh Products Company
All rights reserved